



# STINGRAY MUSIC -VIBES TV APP

USER GUIDE – V2.2.37

DECEMBER 2015

# Stingray Music TV app

## Quick Start Guide:

If launching the Stingray Music app from a Stingray Music TV channel, the app will start in Cover View with that same channel playing.

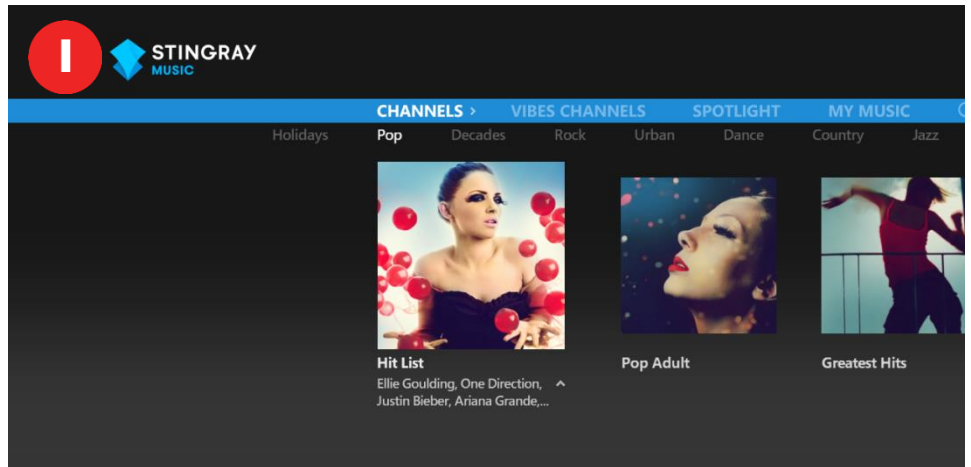
If launching the Stingray Music app directly from the TV provider's TV app menu, no music will play until a channel is selected.

User will arrive at the Channels section by default, but they can access the Vibes Channels section from the main menu bar and also play music there\*.

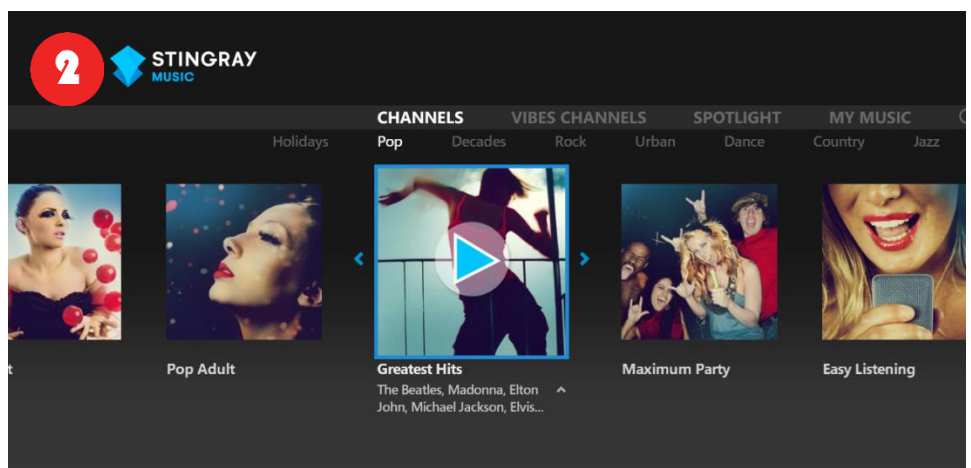
Channels and Vibes Channels are located along the main menu bar. Subsections are accessed by moving along the secondary menu bar below.

To navigate, highlight the appropriate menu bar and scroll using the remote's arrow/directional keys.

*\*As a first-time user, no content is available yet in Spotlight or My Music sections.*



Click on any of the representational images within Channels or Vibes Channels to start playing that channel.

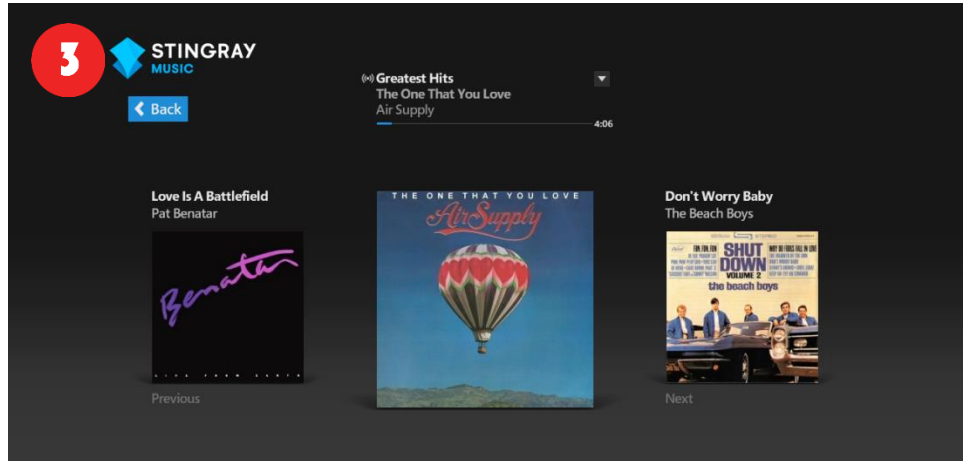


Clicking on the image of a channel brings the user to the Cover View page (as pictured on the right), where they see album cover artwork and information on the current track.

Previous and next tracks are also displayed.

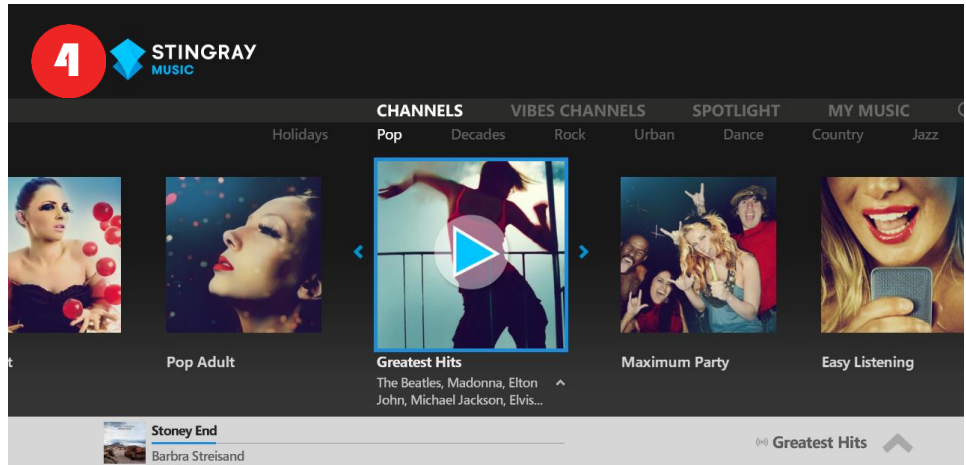
After a few seconds of idleness, the info panel on this screen will disappear.

End the screen's idle mode by using the remote's arrow/directional keys. This action will recall the info panel. Once the on-screen Back button becomes visible again, user can then select it to continue browsing for music.



User may return to Cover View by clicking on the player activity box (the grey horizontal banner along the bottom of the screen, as pictured on the right).

Each time Stingray Music is launched from the app menu after that, the app will open on the Cover View of the last played channel.



## Essential Definitions

**Channels:** A set (a.k.a. linear) music program made up of tracks delivered in a scheduled mode that the user listens to at the particular time they are being offered. The tracks are selected by a music programmer and are classified by genre.

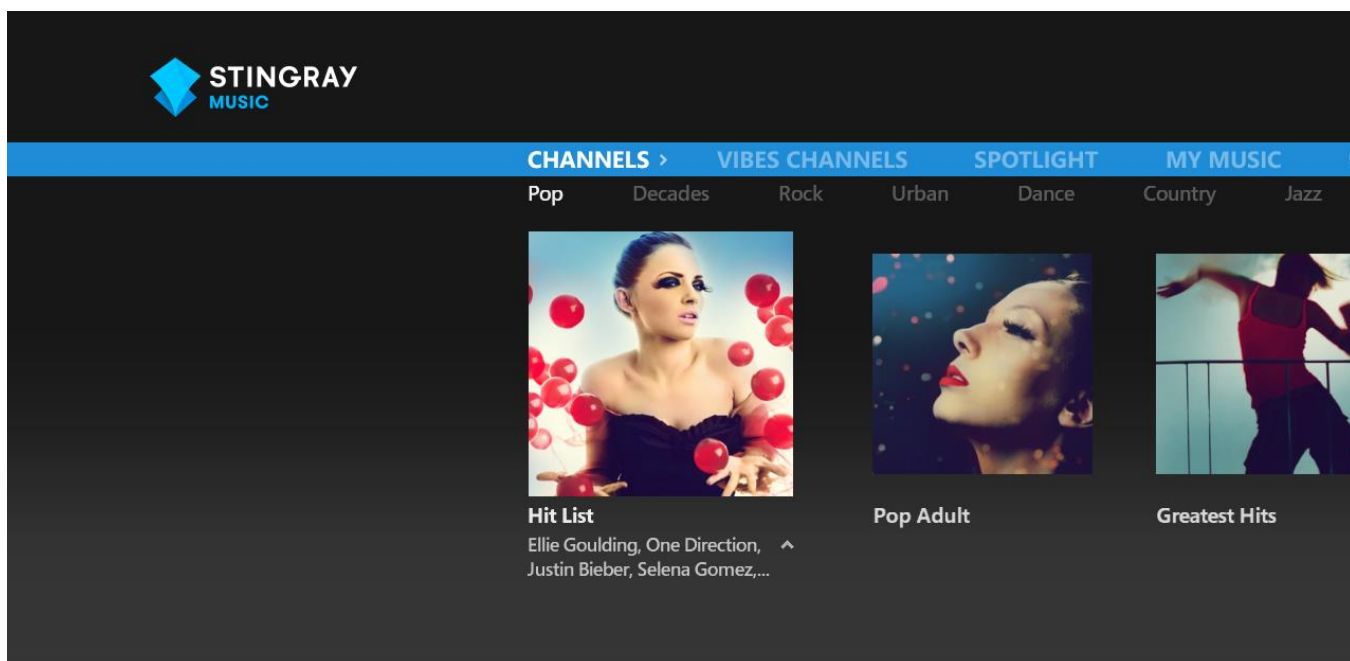
**Vibes Channels:** Vibes channels are created to provide the perfect music in every genre and from every era, for all activities, moods and themes. These types of channels can be explored by using a combination of filter tags that help to locate them.

**Filter:** Filters are keywords that are attributed to Vibes channels. Each Vibes channel is tagged with activity, mood, theme, era and genre filters. The user can find the perfect music for every occasion by exploring and combining filters.

*Multiple, complementary Vibes filters are assigned to each Vibes channel.*




## Initial Launch - Stingray Music

- When the Stingray Music TV app is launched directly from the TV provider's TV app menu, no music will play until a regular or Vibes channel is selected.
- By default, the Stingray Music TV app usually opens on the first subsection of the Channels section, Pop.



Appearance of the Stingray Music application on initial launch

## Stingray Music – Seven Main Sections:

|                 |  |
|-----------------|--|
| CHANNELS:       | Regular streaming music channels from the TV Provider’s lineup that are classified by genre. Each genre is its own subsection within Channels (jump to <a href="#">CHANNELS</a> )                              |
| VIBES CHANNELS: | Music channels that the user can explore by combining activity, mood, theme, era and genre filters (jump to <a href="#">VIBES CHANNELS</a> )   |
| SPOTLIGHT:      | The subsections within serve to give the user channel suggestions based on their musical preferences, or from the in-house music experts at Stingray (see <a href="#">SPOTLIGHT</a> )                          |
| MY MUSIC:       | Section where favorite channels and listening histories are saved (jump to <a href="#">MY MUSIC</a> )  |
| SEARCH:         | Useful for querying an artist name, a channel or a Vibes filter (jump to <a href="#">SEARCH</a> ).<br>Represented by a  icon  |
| SETTINGS:       | Profile management, About page and other extras are found here (jump to <a href="#">SETTINGS</a> ).<br>Represented by a  icon |
| EXIT TO TV:     | For when user wants to leave the app. Represented by a  icon on the main menu bar (see <a href="#">EXIT TO TV</a> )       |

These principal sections are located along the main menu bar.

Access these sections by moving left or right on the main menu bar, using the remote’s arrow/directional keys. Selections are confirmed with the OK/ Select button on the remote.

Once a section along the main menu bar is accessed, its subsections appear immediately below, on a secondary menu bar.

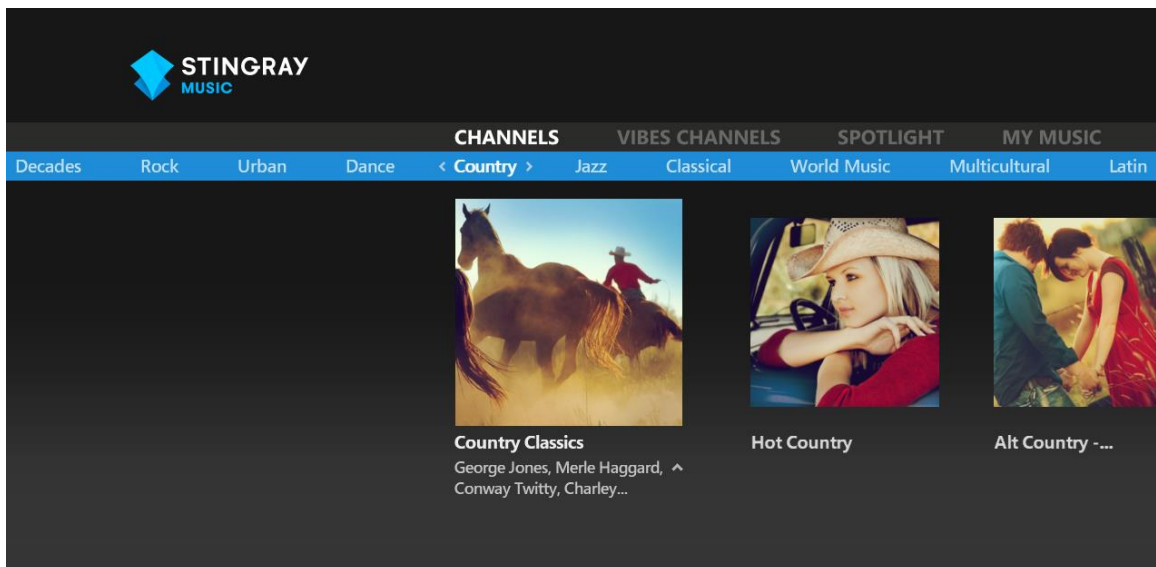
## How to know which section (or subsection) is currently in view?



When the user has accessed a section (also applies to subsections on the secondary menu bar):

- That section's header is typically brighter than the other sections' headers.
- Chevron arrows appear on either side of the header of the section that is currently in view. The arrows indicate that other sections (or subsections) are accessible in the direction they're pointing.

## CHANNELS

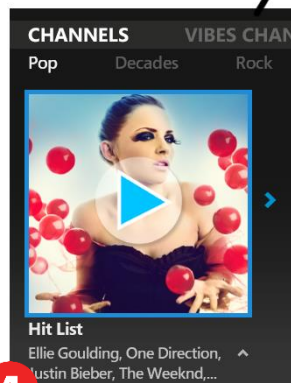


CHANNELS section. Genres are accessible from the secondary menu bar. Channels are displayed on a horizontal carousel just below.

## On playing a channel

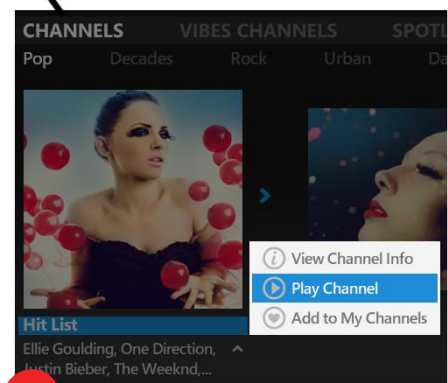
- 1** Access the Channels section (on the main navigation menu bar).
- 2** Move down to highlight the music genres on the secondary menu bar. Move laterally to the desired genre. (Here, Pop is used as an example).
- 3** Move down once more to access that genre's channels and browse them by navigating to the right.

Each channel is represented by a descriptive image.



- 4** Play channels by clicking on their image with the remote's OK/Select button.

This method triggers the Cover View.

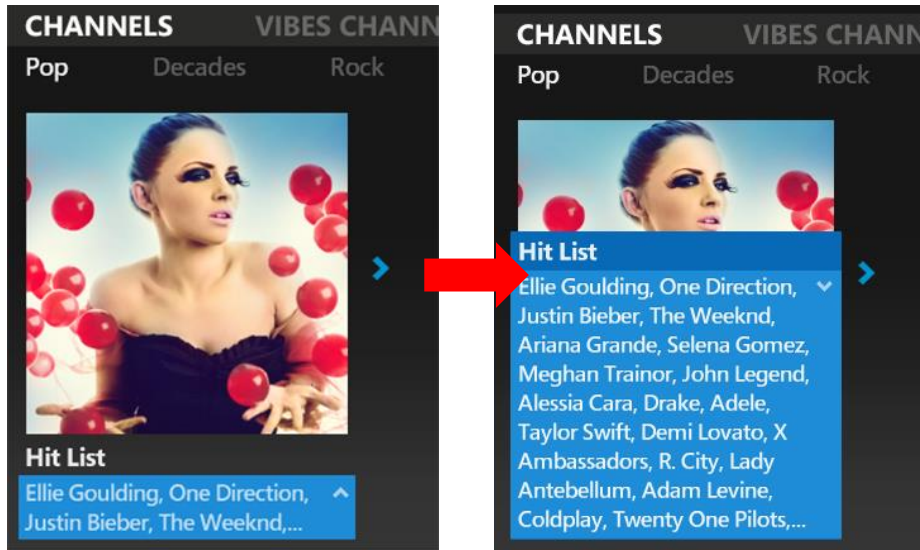


- 5** Or, click on the channel name directly underneath its image to display the contextual menu.

Choose Play Channel.

This method doesn't trigger the Cover View; this way, the user can continue browsing.

## Additional Info Below Channel Names



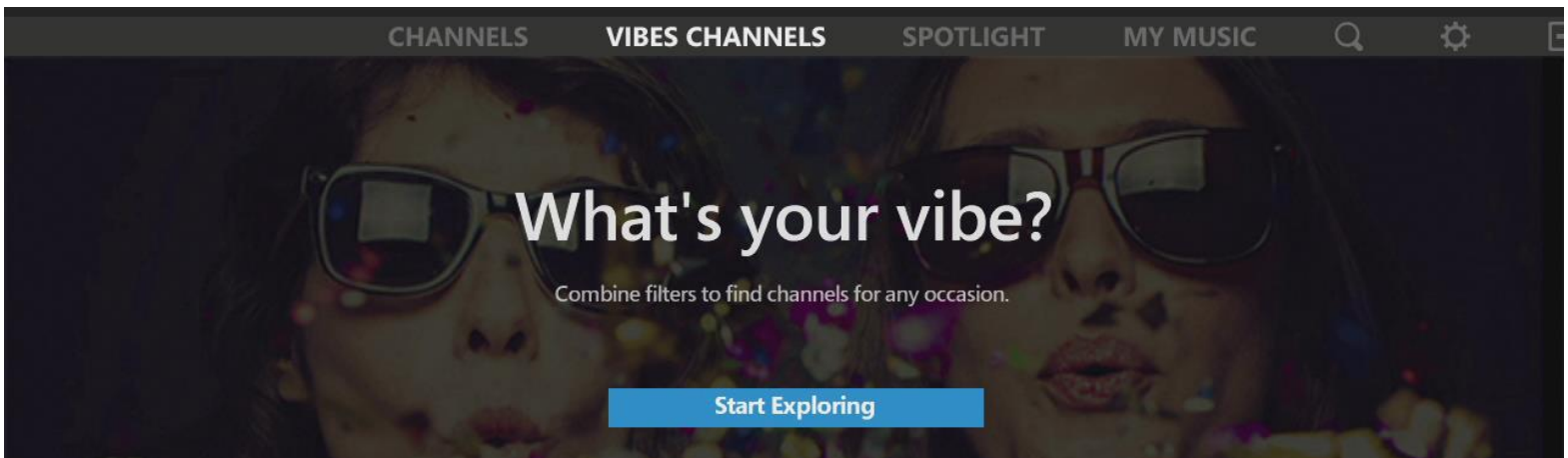
To view a list of artists usually featured on a channel, click the field under the channel name.

The field expands to reveal a longer list of artists featured on the channel.

Channels can continue to be browsed while this list is still expanded.

To collapse the field: while highlighting it, press either the OK/Select, Up or Down button on the remote.

## VIBES CHANNELS





Vibes Channels is a distinct music section that is explored by means of first selecting filter tags based on activities, moods, themes, eras and genres, then playing a channel that corresponds to these selections.

Vibes Channels are programmed by music experts around the globe.

## Essential Glossary

### What is a Vibes Channel?

Vibes channels are created to provide the perfect music in every genre and from every era, for all activities, moods and themes. These channels can be explored by using a combination of Vibes filters.

### What is a Vibes Filter?

Vibes filters are keywords that are attributed to Vibes channels. Each of these channels is tagged with activity, mood, theme, era and genre filters. The user can find the perfect music for every occasion by exploring and combining filters.

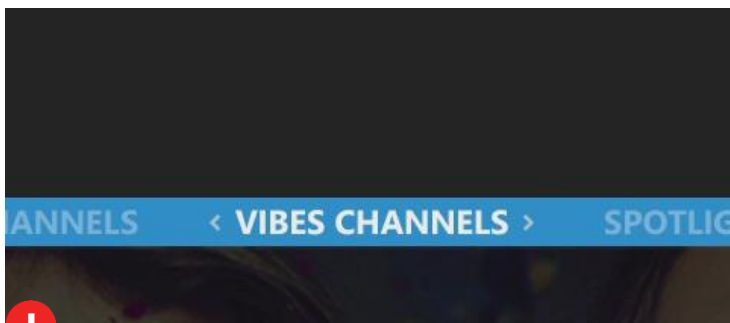
*Multiple, complementary filters are assigned to each Vibes channel.*

### What is Start Exploring?

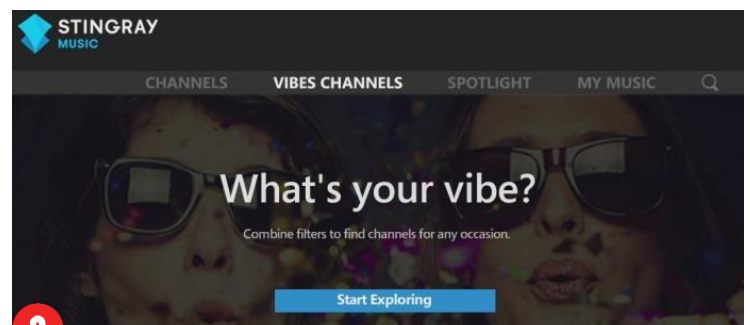
The Explore function serves to find Vibes Channels that suit the moment by using filters among categories defined by activity, mood, theme, era and genre.

Adding Vibes filters opens up the opportunity to explore the resulting Vibes Channels.

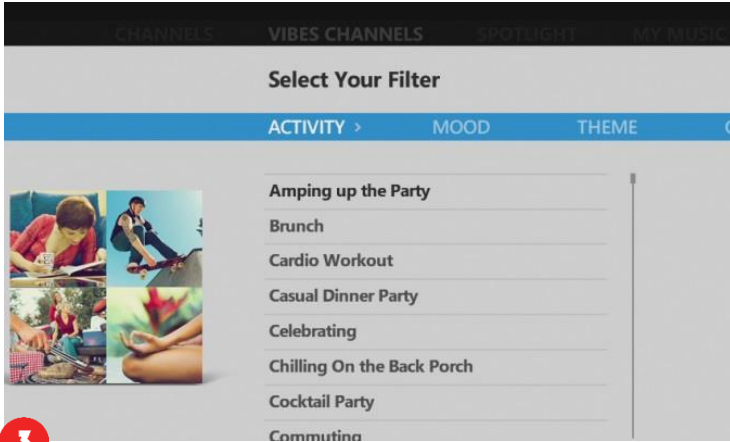
## Finding Music to Play From the Vibes Channels Section



Access the Vibes Channels section, found on the main menu bar



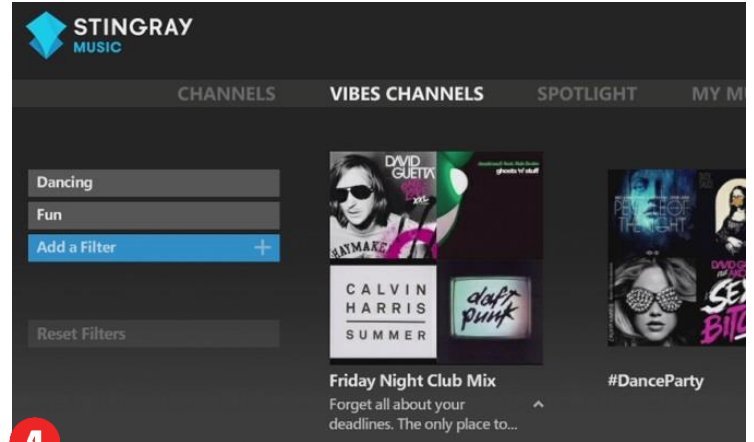
If there are no filters currently in use, this invitation to “Start Exploring” appears. Select the “Start Exploring” button



The Explore interface will then appear. Here, filters are selected from categories based on Activity, Mood, Theme, Genre and Era.

Or

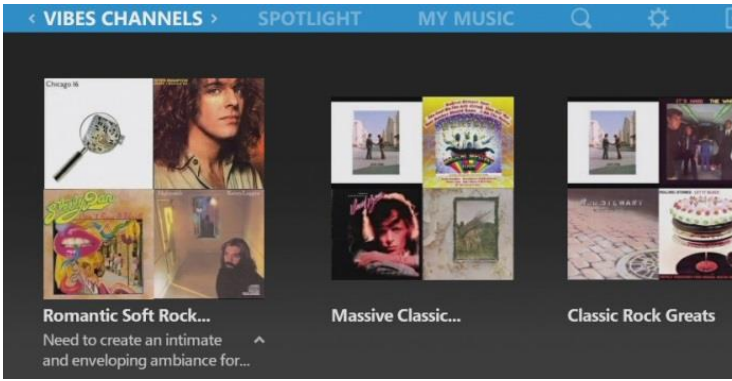
Find and add a filter by querying a keyword in the Search section (Search is a section found on the main menu bar – please refer to the [Search](#) section for more info)



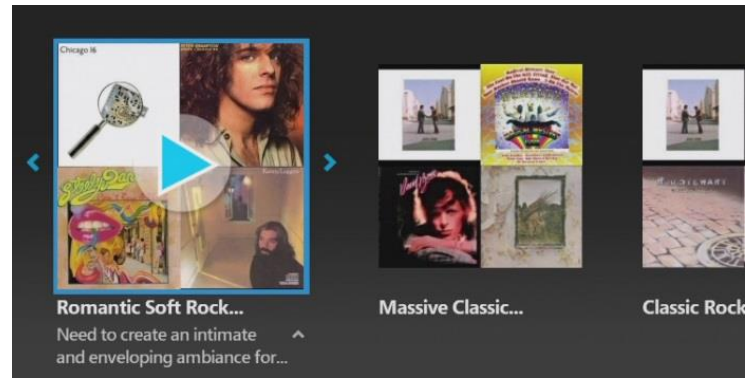
Up to three (3) filters, one per category, may be selected. Results start appearing when the first filter is added. The addition of more filters further narrows the results.

### Note - Using the Explore Interface to Find Vibes Channels:

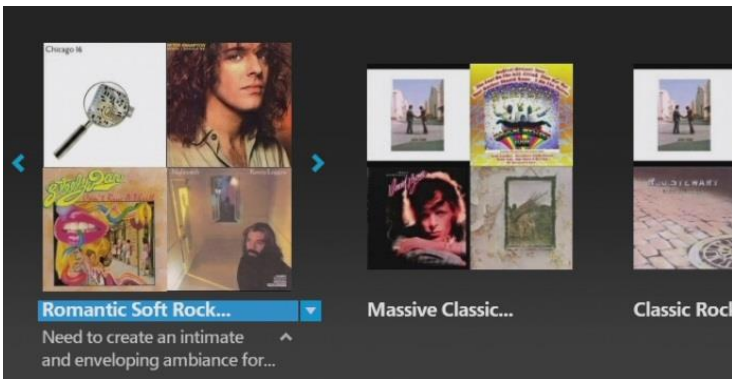
- While up to three (3) filters may be selected (one per category), in many cases selecting two (2) or even a single filter will often give the best results.
- If a combination of two filters returns more than ten (10) channels, a third filter may be selected to narrow down the results.
- Please note that the use of a filter reduces the number of remaining filters to choose from (in order to make cohesive filter combinations and to return relevant channel results).
  - For example: if the first filter selected is “getting married”, the list of remaining filters may be reduced in the remaining categories since non-applicable filters will no longer be available (e.g. Furious, Middle East, Kids and Teens, etc.)
- Please note, that if the user chooses a very specialized filter, which results in a selection of channels that cannot be further filtered down, it may sometimes not be possible to use additional filters.



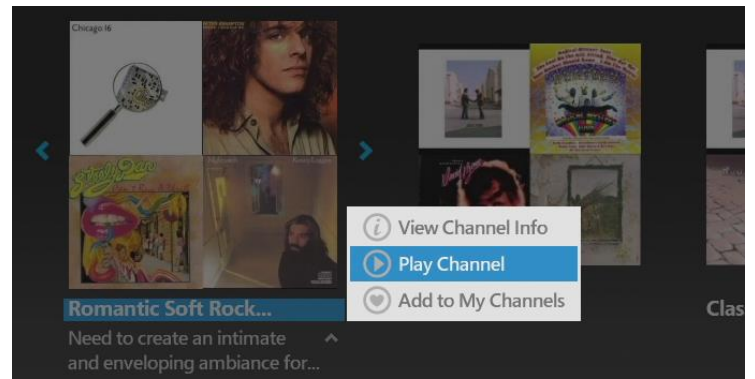
Each Vibes channel is depicted by a composite image of album covers of artists who are typically found within its music rotation.



Just like the regular Stingray channels, Vibes channels can be played by clicking on their image with the remote's OK/Select button.

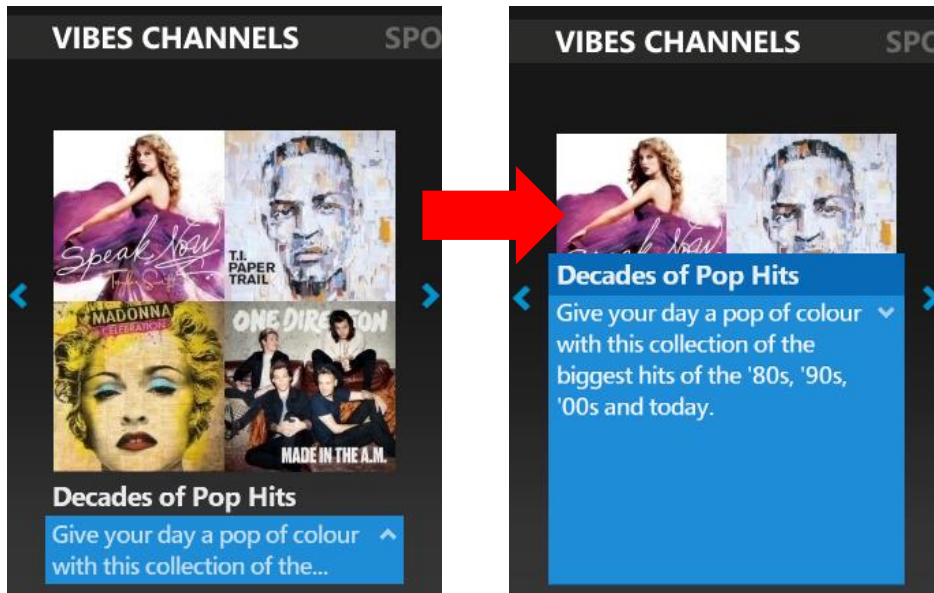


Or, select the channel name that's directly underneath the image to display its contextual menu.



Choose Play Channel.

## Expandable Descriptions beneath names of Vibes Channels



A short description is displayed underneath the titles of Vibes channels (as in the above image).

Although it may appear incomplete...

... simply click on the text to expand it.

Channels can continue to be browsed while this description is still expanded.

To collapse the description: while highlighting it, press either the OK/Select, Up or Down button on the remote

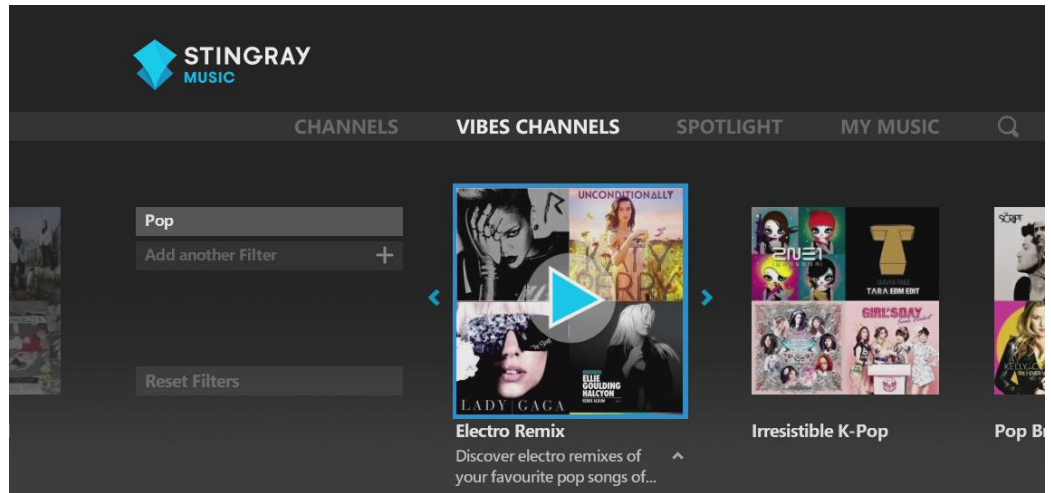
## Easy Method for Rejoining Filters While Browsing Vibes Channel Results

After adding filters to get Vibes channel results, the user will typically move their remote control's focus from the filter slots and over to the right to start browsing these results, highlighting each one at a time.

The difficulty raised is when the user is already browsing through a carousel of their results. Rather than having to move left and pass again what they've seen in order to regain access to their filters, they may simply do a quick **Up** then **Down** move on their remote. For clarification, observe the steps that follow:

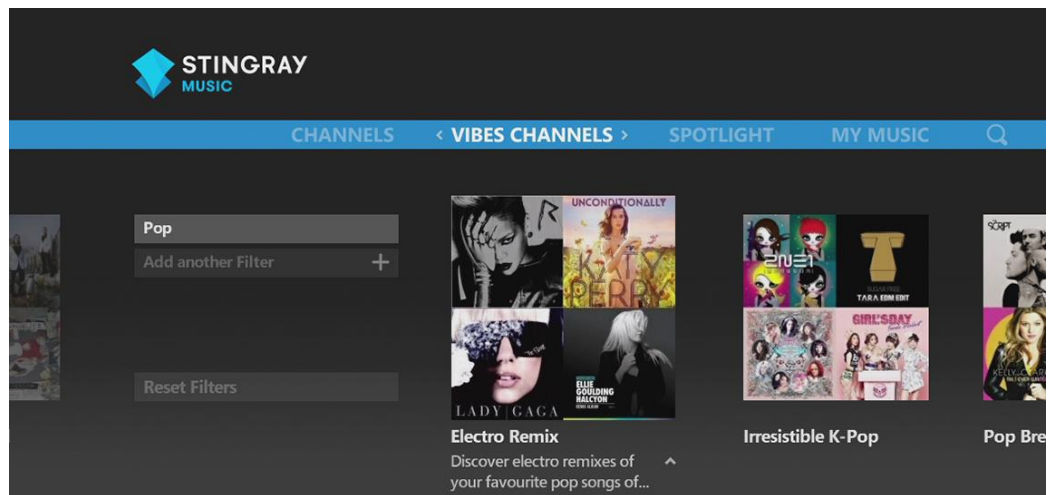
1

When already browsing Vibes channels that resulted from making filter selections...



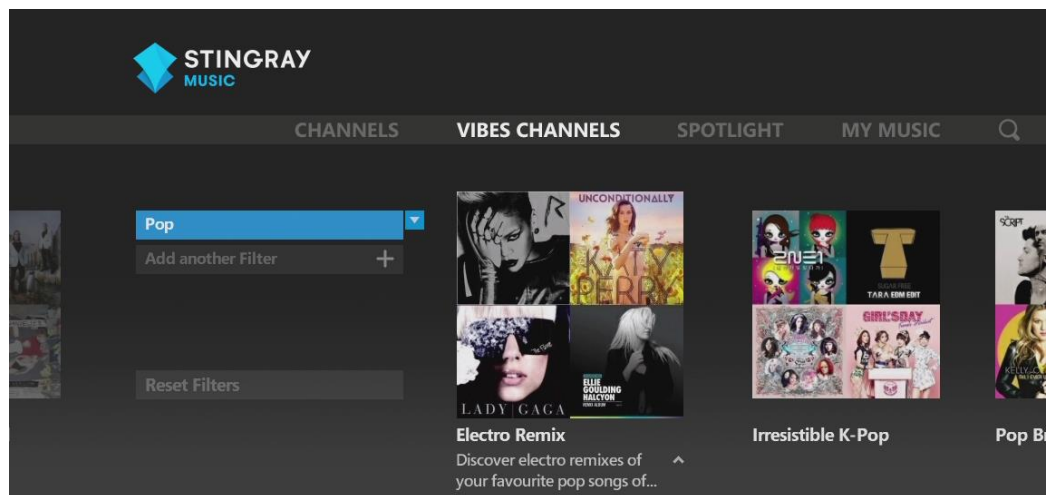
2

... it is possible to press **Up** on the remote's directional keys, to momentarily highlight the main menu bar...



3

... and then press **Down** to quickly rejoin the Vibes filters on the left.

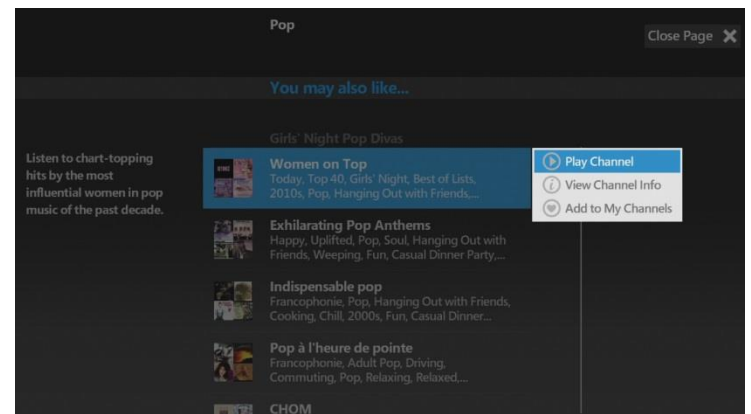
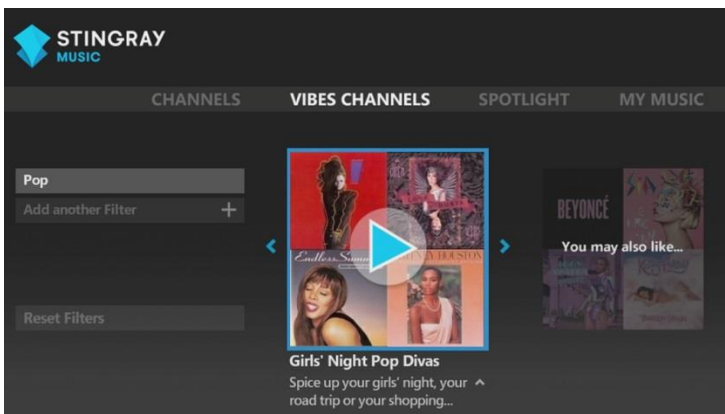


## “You may also like” Explained

On the right end of the carousel, after the last Vibes channel result is found a box marked “You may also like...”

Typically, when certain filter choices are likely to return a broad selection (e.g. combining Pop with Dancing), the ten (10) most relevant results are displayed horizontally as a carousel. The rest of the results can be seen when clicking on “You may also like”.

When certain filters, either alone or combined, are so specific that they return fewer than ten (10) results, “You May Also Like” can still be found to the right of these results. In this case, the suggested Vibes channels from the You May Also Like list are shown because they contain at least one of the user’s selected filters.



A “You may also like” box is found on the right end of the Vibes Channels carousel for every result that comes from filter exploration.

Click on the “You may also like...” box

Results within “You may also like...” are displayed vertically.

If filter exploration returned at least ten results in the previous screen, then focus will begin on the eleventh (11th) result of this list.

Highlighting a channel here will also display its description on the left side of the screen.

Select a channel in this list to view its contextual options: Play Channel, View Channel Info and Add to My Channels.

## Modifying Vibes Filters

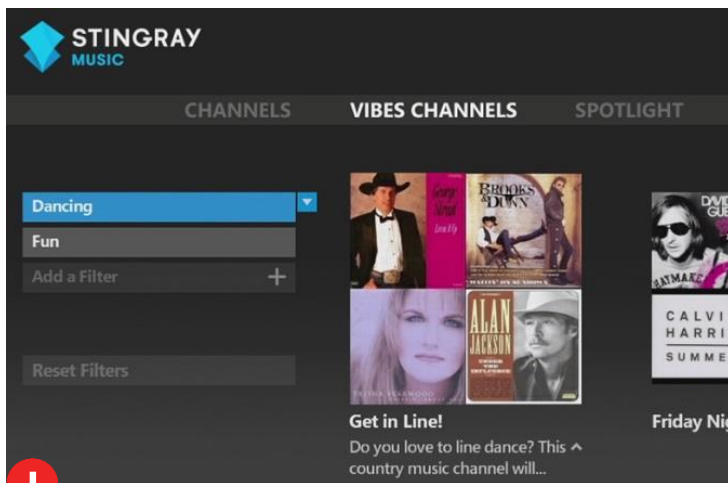
When exploring Vibes channels, the user can easily modify their filter selections at any time.

This is helpful when, but not limited to:

- Playing with different filter combinations to view the resulting Vibes channels that appear
- A filter was selected by mistake
- Exploring Vibes channels with one less filter
- Wanting to start a new search using a brand new selection of filters

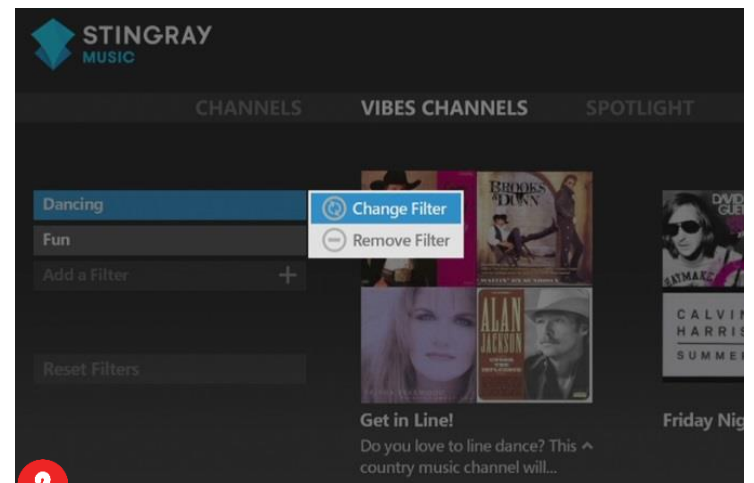
## Use Case:

In the Vibes Channels section, the user wants to modify one of the filters they've previously selected.



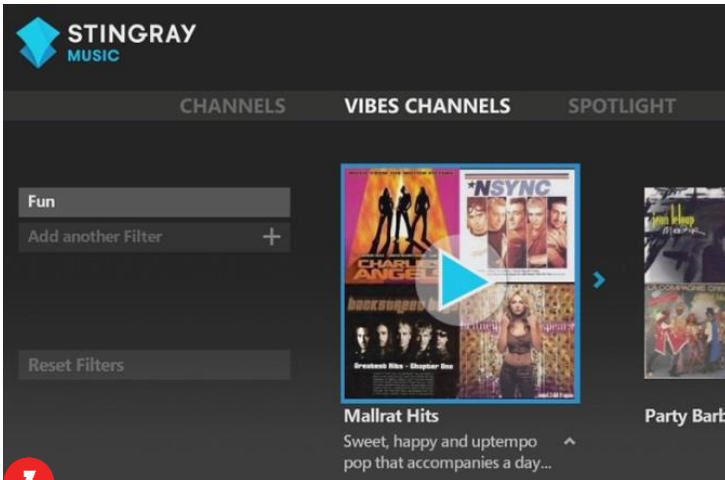
The user returns to the Vibes Channels section.

Since they've already preselected some filters, they click on the filter they want to change...

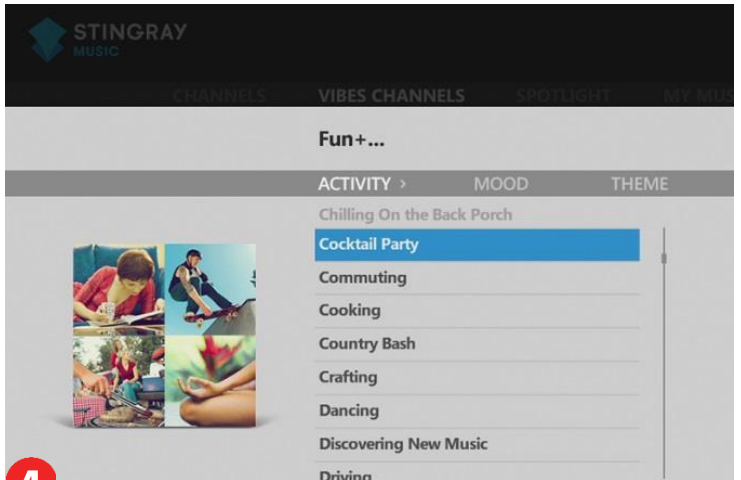


... Options for that filter appear:

- Change Filter
- Remove Filter

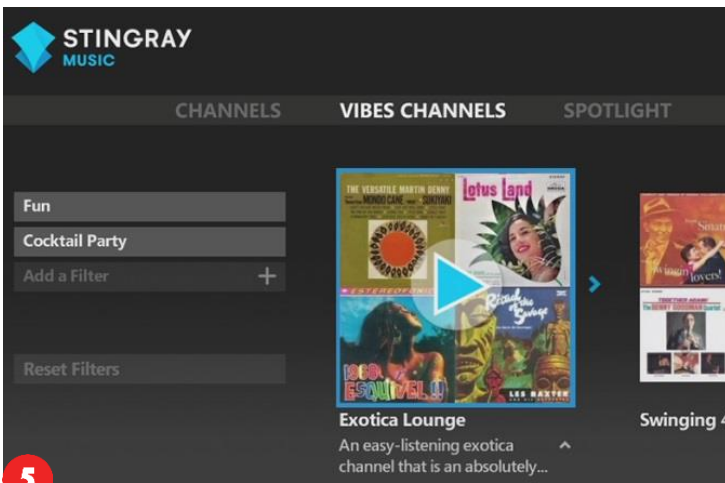


Remove Filter can be selected to have one less filter to explore with...



... or Change Filter can be selected instead.

In this situation, the Explore interface will reappear, and the user can select a new filter.



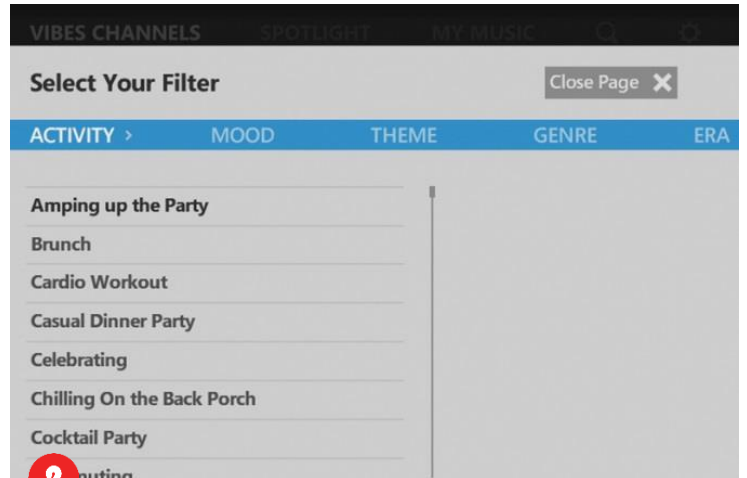
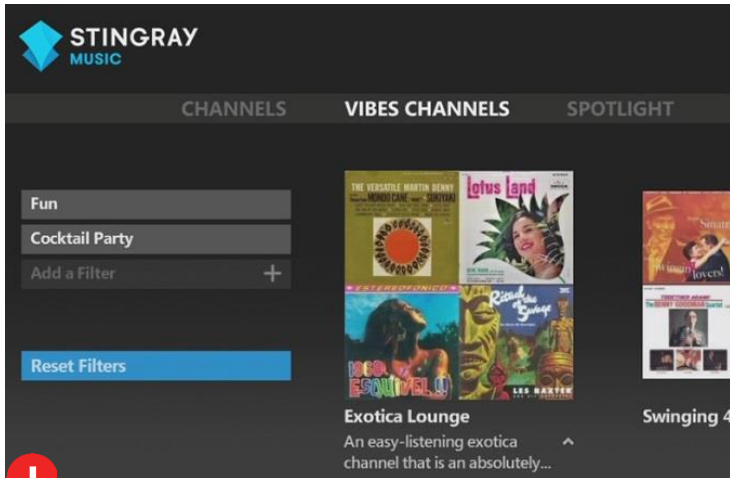
As soon as a filter is modified (e.g. deleted or replaced) the Vibes channel results are updated accordingly and reappear to the right.

## Playing a New Vibes Channel

### Use Case:

The user is already listening to a Vibes channel, but would like to replace the previous filters to play a different Vibes channel.



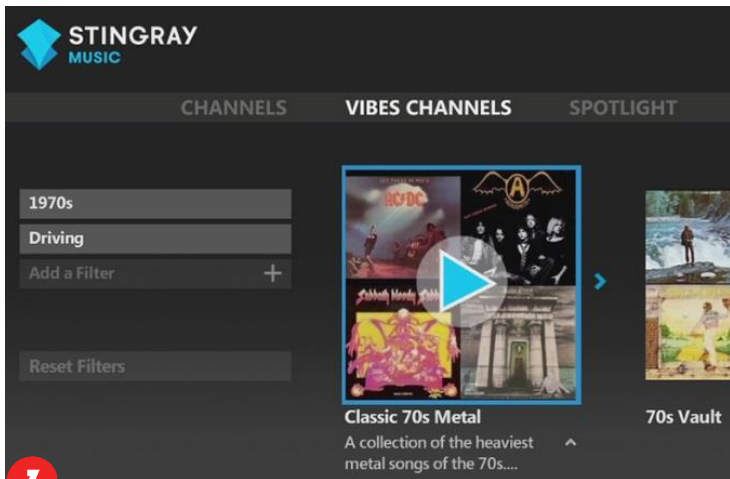


1 User returns to the Vibes Channels section to explore more channels.

Their previously chosen filters are still present on the left side of the screen.

User clicks on the “Reset Filters” button, underneath their previously chosen filters.

2 Current filters are cleared; user is returned to the Explore interface to select their new filter(s).

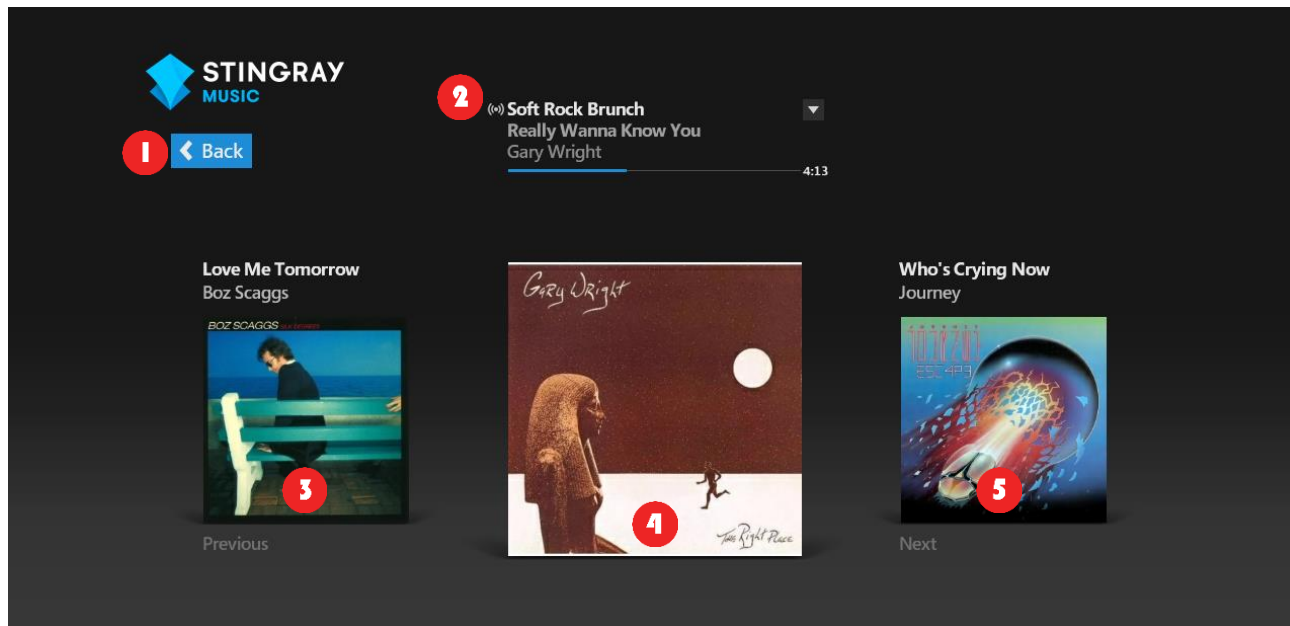


3 User selects new filter(s); new Vibes channel results appear to the right.

When the user plays a new Vibes channel from among the results, any channel they may have previously been listening to is replaced.

## The Cover View

While a channel plays music, the Cover View (a visual representation of what is currently playing on the selected channel) can be accessed. Clicking directly on the image of a channel takes the user immediately to Cover View.



This is the typical appearance of the Cover View for any channel type.

### 1 BACK:

Clicking the on-screen Back button returns the user to the previous screen.

*If this on-screen button is not visible, pressing one of the remote's arrow/directional keys makes it reappear. It will disappear again after a period of inactivity.*

### 2 NOW PLAYING INFO:

Information on the current track that is playing on the selected channel:

- Channel name on the first line, followed by its channel number according to the user's TV provider
- Name of current track on the middle line
- Artist name of the current track on the last line

These first and last lines of info are selectable for extra options. Jump to "[What else can be done on this Cover View page.](#)"

### 3 PREVIOUS:

Album cover art of the previous track. Its track and artist names appear just above it.

*If this information is not visible above the 'Previous' album cover, pressing one of the remote's arrow/directional keys makes it reappear. Previous track info disappears again after a period of inactivity.*

4

#### CURRENT COVER:

Album cover art of the current track. Size of image is purposely larger than those of the previous and next tracks.

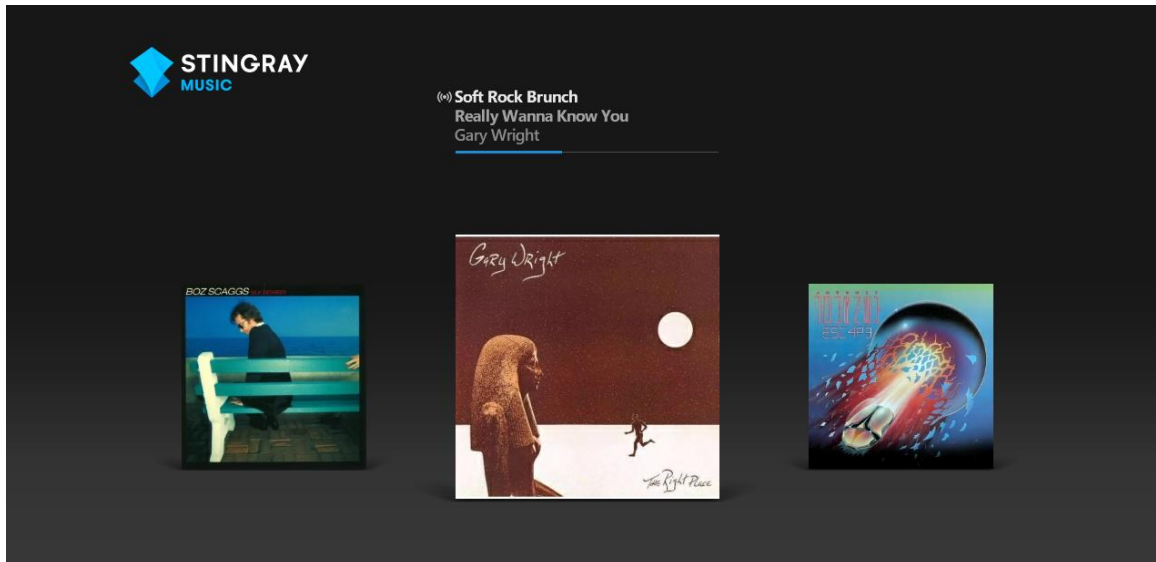
5

#### NEXT:

Album cover art of the next track scheduled to play. Its track and artist names appear just above it.

*If the track and artist names are not visible above the 'Next' album cover, pressing one of the remote's arrow/directional keys makes them reappear. Next track info disappears again after a period of inactivity.*

If the page is inactive for a few seconds, the on-screen BACK button and any secondary information will be hidden as shown below:



*Modified appearance of the Cover View page after a few seconds of inactivity.*

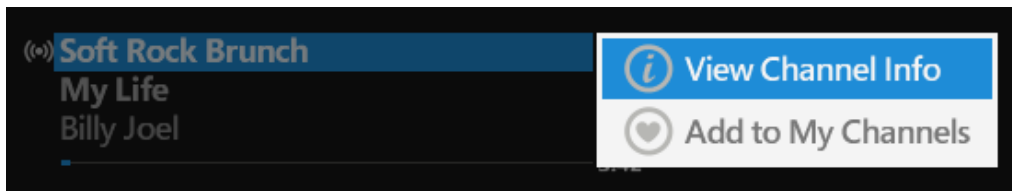
Press on any of the remote's arrow/directional keys to reveal the BACK button and additional information (Previous and Next information, total time of current track, focus of remote).

### What else can be done on the Cover View page?

The channel name, as well as the artist name of the current track, can be selected for extra options.

## Channel Name

Use the remote's OK/Select button to select the channel name displayed at the top of the Cover View page. Two options will then appear in a contextual menu:

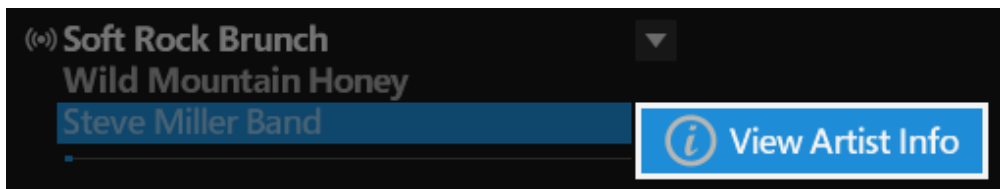


*Channel options appear when the channel name is clicked on*

**View Channel Info:** takes the user to a subsection that contains additional information on the channel they are currently listening to. Jump to "[Channel Info - Contents](#)".

**Add to My Channels:** adds the channel to the current profile's favorites list (called My Channels, found in the MY MUSIC section). Jump to "[Adding Channels as Favorites for Quicker Access](#)".

## Artist Name



**View Artist Info:** takes the user to a list of channels (Vibes channels included) that are likely to feature the selected artist. From here the user can join said channels, save these as favorites and access their Info page individually.

---

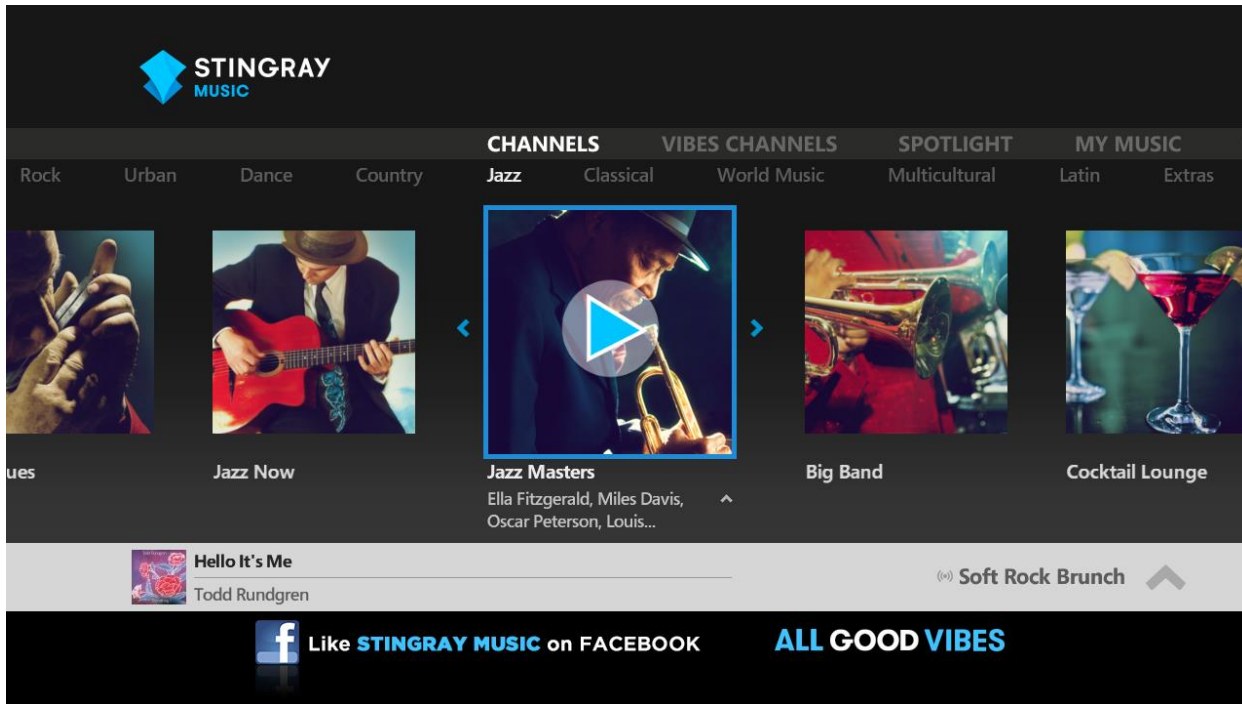
Occasionally, multiple artists may be seen collaborating on a track. In such cases, selecting the artist line triggers a contextual menu of the artists involved. Choose an artist name among the list to get to their View Artist Info option.

---

Artist Info can also be accessed from the Artists page of any Channel Info.

---

## Returning to the Main Menu Sections from Cover View



Appearance of the main menu sections when browsing channels while music is playing (applies to the Channels, Vibes Channels, Spotlight and My Music sections). The player activity box displays what is currently playing (grey horizontal banner above self-promo, along the bottom of the screen). Click on the player activity box to return to Cover View.

Use Case (also applicable when in Vibes Channels, Spotlight, as well as in My Music when it includes user content):

The user wants to play a channel, so they click on its image. This action brings them to the Cover View page with the album covers of that channel that is currently playing.

To return to the previous section (Channels in this case), the user selects the on-screen Back button (to the left of the info panel) to browse and select a different channel (or to go to another section).

In the main areas of any section (i.e. top levels of Channels, Vibes Channels, Spotlight, My Music, Search, as well as when in Settings and Exit to TV), the user can see:

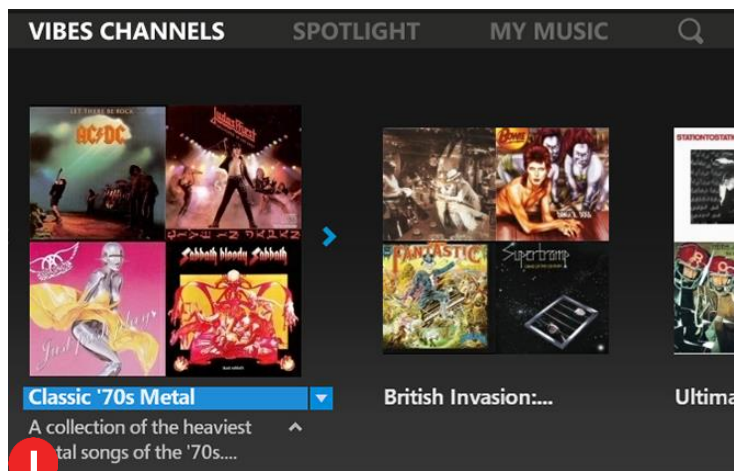
- The **player activity box**: a grey, screen-wide horizontal banner along the bottom of the screen, just above the promotional space. This displays the current track's information and progress bar along with the name of the selected channel. **To return to Cover View from a main section, the user clicks on the Player Activity box.**

**Note:** Playing a new channel replaces what was previously heard and new Now Playing info is displayed in the player activity box.

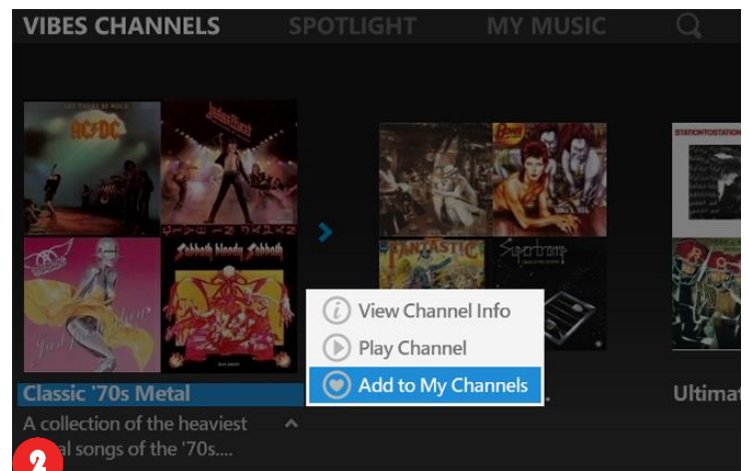
## Adding Channels as Favorites for Quicker Access

Use Case:

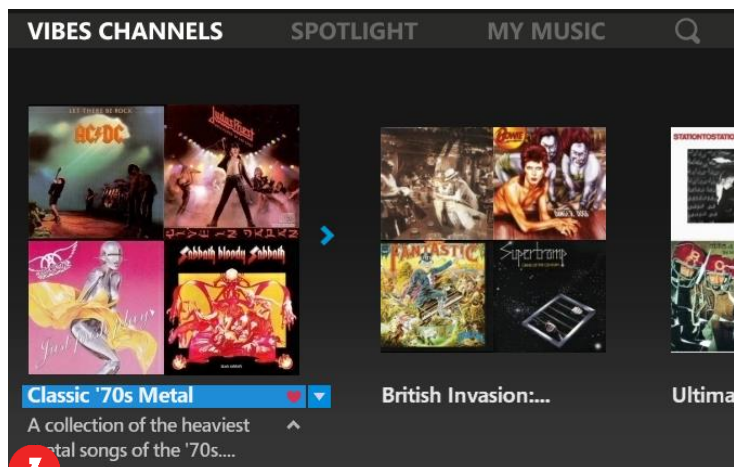
In the images below, the user is browsing the Vibes Channels menus (also applicable when in Channels, Spotlight, as well as in My Music when it includes user content):



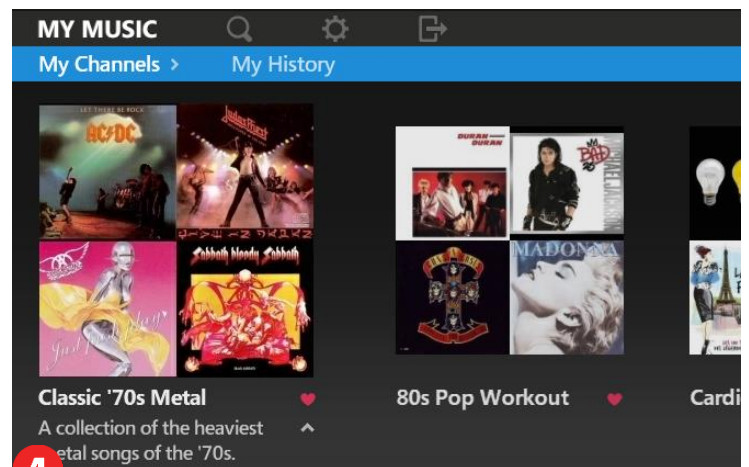
1 Select a channel name seen beneath each image.



2 List of options appears from a contextual menu.  
Select Add to My Channels.



3 Once a channel is made into a favorite, a heart icon appears next to its name.



4 Favorite channels are saved in My Channels.

The My Channels subsection is available from the My Music section.

### A channel name can be selected and made into a favorite anywhere it appears:

- In all genre subsections within Channels
- Within Vibes Channels: results from filter selection(s)
- In all subsections within Spotlight: Recommendations, Most Popular and New
- In My History, within My Music (in My Channels, items can be removed from here)
- When in the Search section and a channel shows up in the results
- When looking at the album art in Cover View, the channel name is in the info panel at the top of the screen
- The channel name also appears at the top of the screen in Channel Info
- In Other Suggested Channels, found within the Channel Info of a Vibes Channel
- In Featured On, seen when clicking on an artist name then selecting View Artist Info from their contextual menu

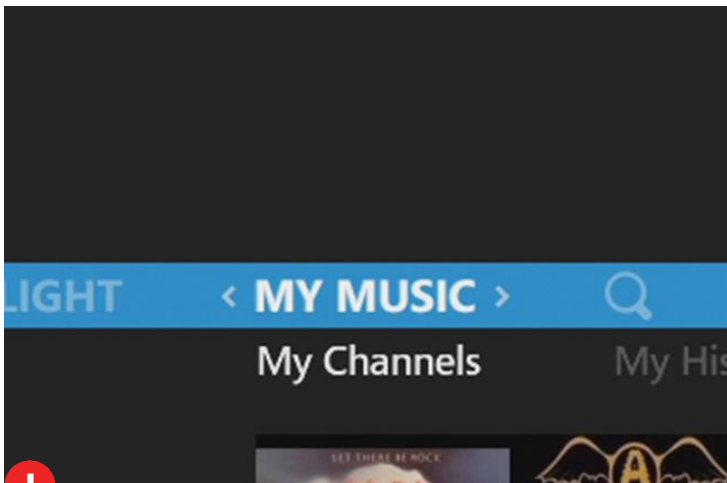
N.B.

Once made into a favorite, the option “Add to My Channels” from a channel’s contextual menu becomes “Remove from My Channels”.

## Accessing Channels that Were Added as Favorites

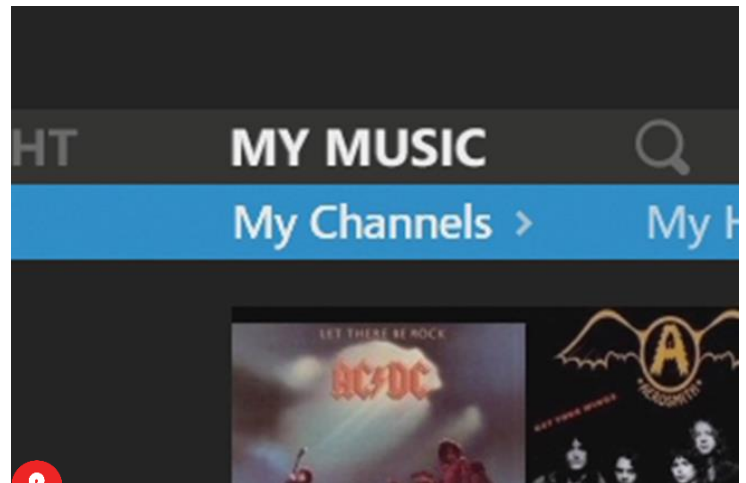
### Case:

In the images below, the user is browsing through their favorite channels in My Music > My Channels.



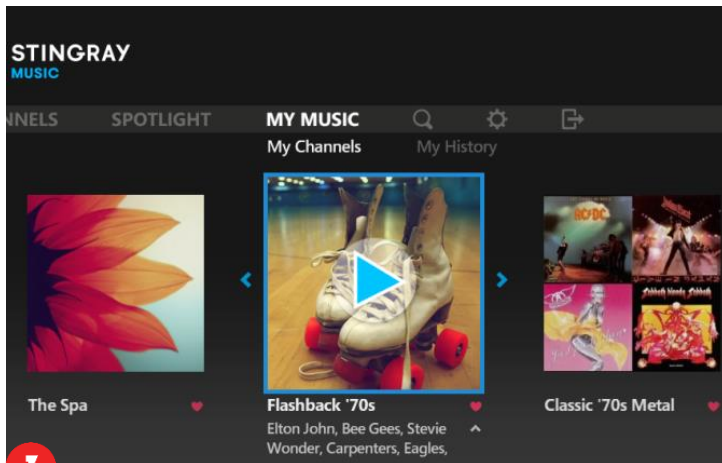
To access My Channels: use the remote’s arrow/ directional keys to move up the screen until the main menu bar is highlighted.

Move to the right until My Music is between the chevron arrows. The subsections will appear below it.



Move down to highlight the subsections on the secondary menu bar.

Move laterally until My Channels’ contents come into focus.



Favorite channels are displayed on a carousel underneath the main and secondary menu bars. The user can play them from here.

Channels can also be removed from this favorites subsection, or from anywhere else they appear in the app.

Alternately, channels that were not made into favorites can still be accessed from My History (provided they were recently played), also found in My Music.

## Channel Info – Contents

The user can access the Channel Info to learn more about a channel, from wherever this channel name appears. The Info subsections are accessed by clicking on the channel name then selecting View Channel Info from its contextual menu.

The Channel Info subsection of a regular Stingray channel is divided into five (5) pages. That of a Vibes channel is divided into four (4) pages. The user moves through these pages by pressing right or left on the remote's arrow/directional keys.

These pages provide additional information on a channel, such as:



## Description:

A short paragraph explains the channel.

The description of a Vibes channel includes the music programmer's name as well as the filters that help to find that Vibes channel.\*

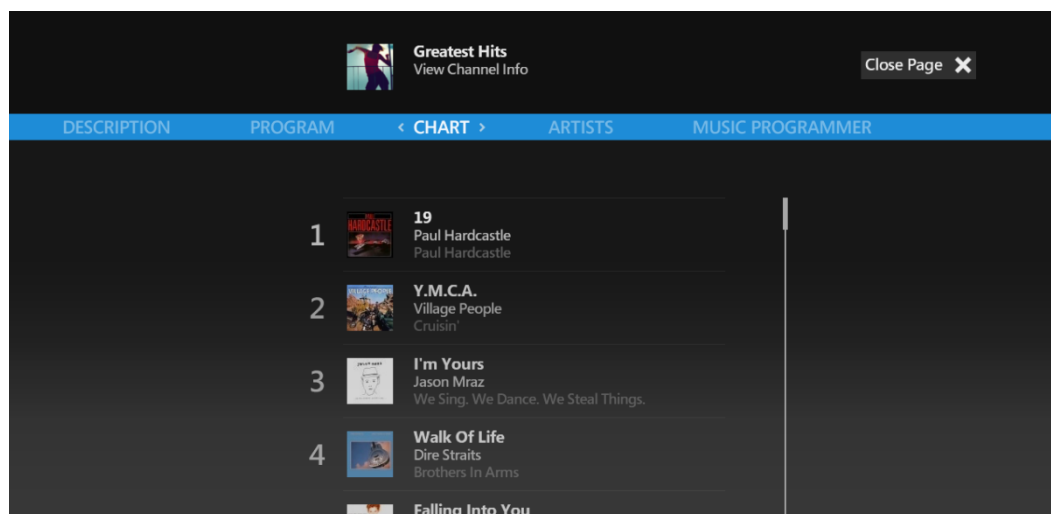
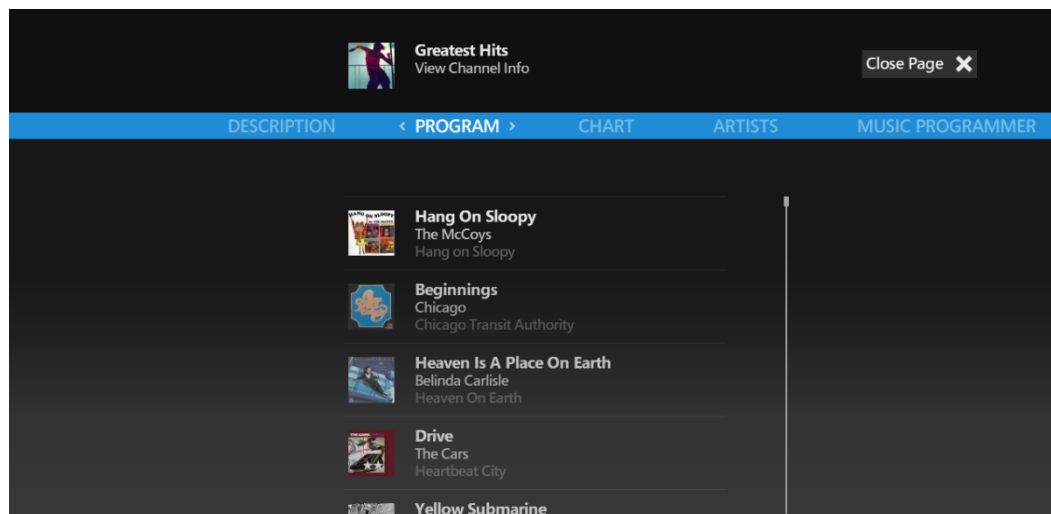
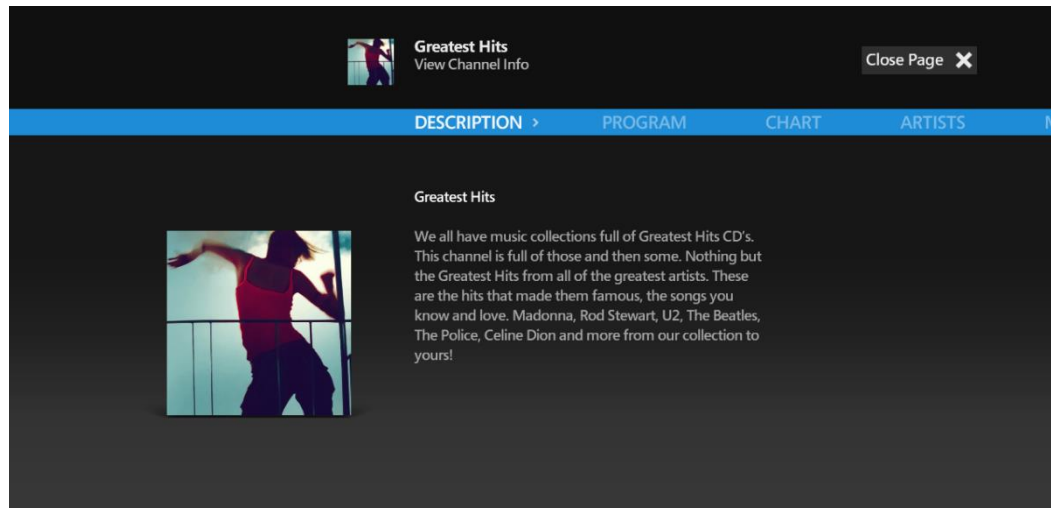
## Program (within Channels section only):

All tracks that played on the selected channel in the last 24hrs are displayed in this automatically-updated, scrollable list.

Cover art of the album from which the track was taken appears to the left of every title.

## Chart (within Channels section only):

Chart of a channel's most popular tracks, starting with the no 1 track.

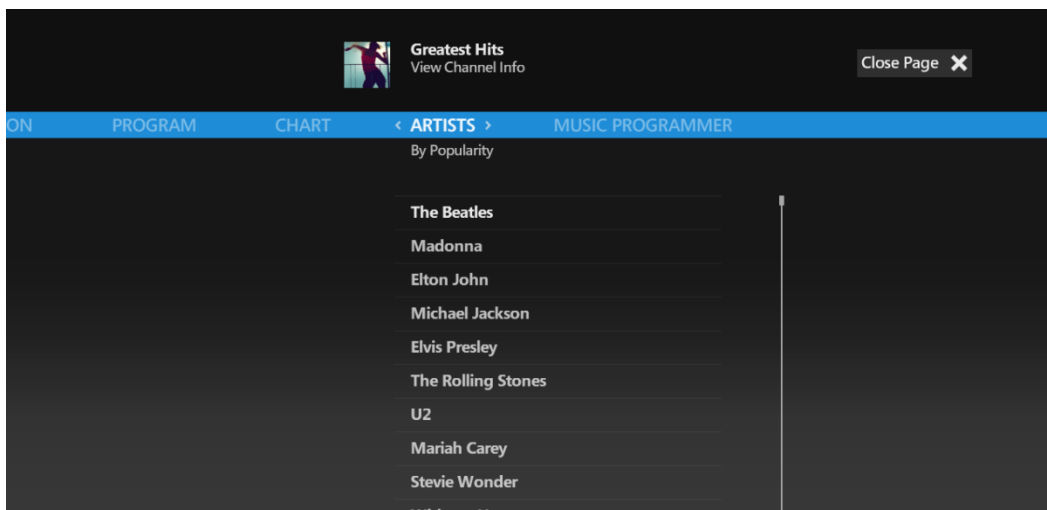


## Artists:

Browse a list of artists featured on a particular channel.

This list can be sorted alphabetically, or by popularity (by changing the filter just below the “Artists” header).

Names in this list are clickable for their Artist Info.



**Greatest Hits**  
View Channel Info

Close Page X

PROGRAM CHART ARTISTS < MUSIC PROGRAMMER

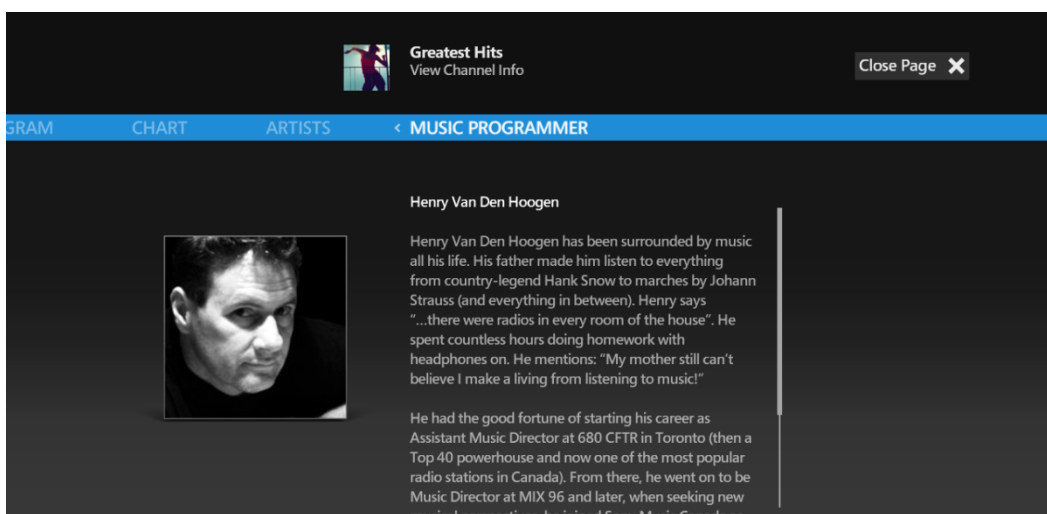
By Popularity

- The Beatles
- Madonna
- Elton John
- Michael Jackson
- Elvis Presley
- The Rolling Stones
- U2
- Mariah Carey
- Stevie Wonder
- Whitney Houston

## Music Programmer (within Channels section only):

Each regular Stingray channel is programmed by a music expert with in-depth knowledge of the genre. Read their short biography on this page.

The names of Vibes channel programmers are displayed in Description instead.



**Greatest Hits**  
View Channel Info

Close Page X

GRAM CHART ARTISTS < MUSIC PROGRAMMER

Henry Van Den Hoogen

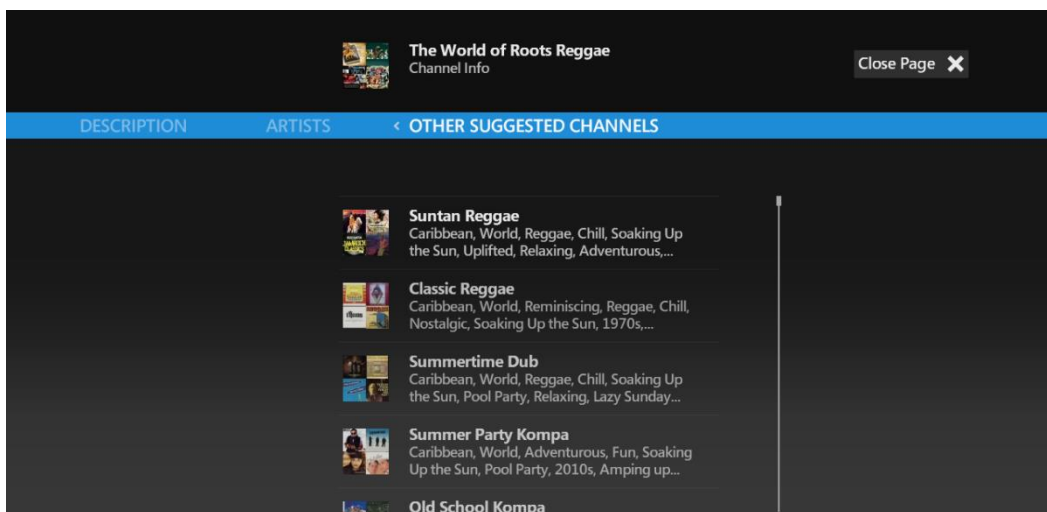
Henry Van Den Hoogen has been surrounded by music all his life. His father made him listen to everything from country-legend Hank Snow to marches by Johann Strauss (and everything in between). Henry says "...there were radios in every room of the house". He spent countless hours doing homework with headphones on. He mentions: "My mother still can't believe I make a living from listening to music!"

He had the good fortune of starting his career as Assistant Music Director at 680 CFTR in Toronto (then a Top 40 powerhouse and now one of the most popular radio stations in Canada). From there, he went on to be Music Director at MIX 96 and later, when seeking new musical perspectives, he joined Sony Music Canada as...

## Other Suggested Channels (within Vibes Channels section only):

User can consult a list of other recommended Vibes channels similar to the one into which they are currently looking.

View Channel Info, Play Channel and Add to My Channels can be selected from a contextual menu when clicking on the name of any channel on this page.



**The World of Roots Reggae**  
Channel Info

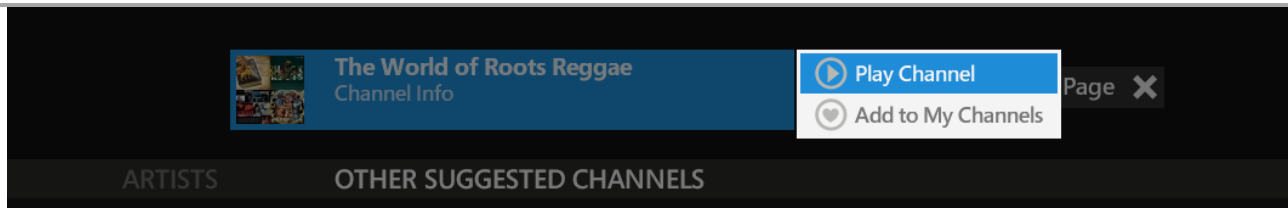
Close Page X

DESCRIPTION ARTISTS < OTHER SUGGESTED CHANNELS

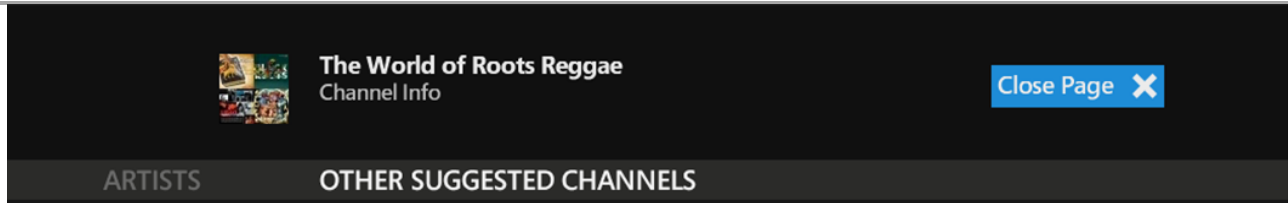
- Suntan Reggae**  
Caribbean, World, Reggae, Chill, Soaking Up the Sun, Uplifted, Relaxing, Adventurous...
- Classic Reggae**  
Caribbean, World, Reminiscing, Reggae, Chill, Nostalgic, Soaking Up the Sun, 1970s,...
- Summertime Dub**  
Caribbean, World, Reggae, Chill, Soaking Up the Sun, Pool Party, Relaxing, Lazy Sunday...
- Summer Party Kompa**  
Caribbean, World, Adventurous, Fun, Soaking Up the Sun, Pool Party, 2010s, Amping up...
- Old School Kompa**

## Other functionalities within Channel Info:

The channel can be added to My Channels (or removed from it, if the channel has already been added) by highlighting and then selecting the channel name displayed at the top of the screen. Play Channel also appears as an option if it's not currently being listened to.

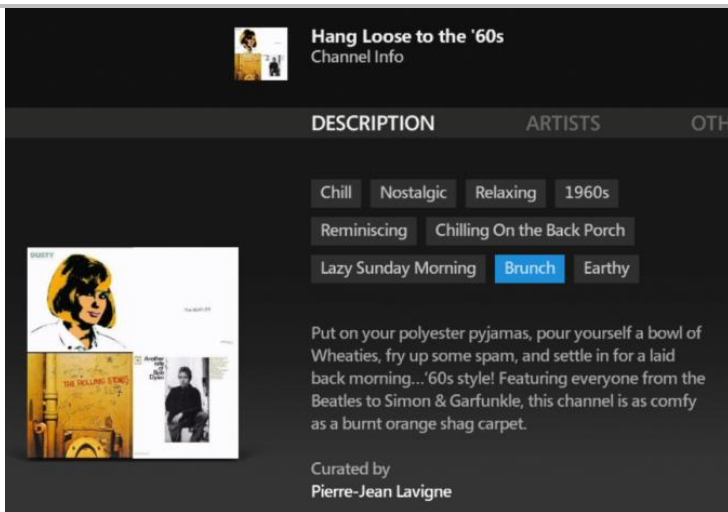


Highlighting then selecting Close Page allows the user to leave Channel Info and return to the previous page. The Back button on the remote can also be used to perform the same operation.

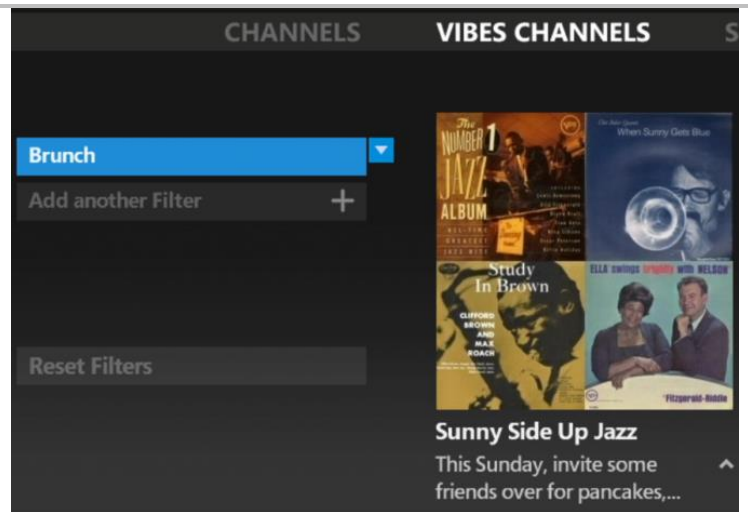


## Vibes info description page

\* To expand on what was previously said about the Description page in Channel Info for Vibes Channels:



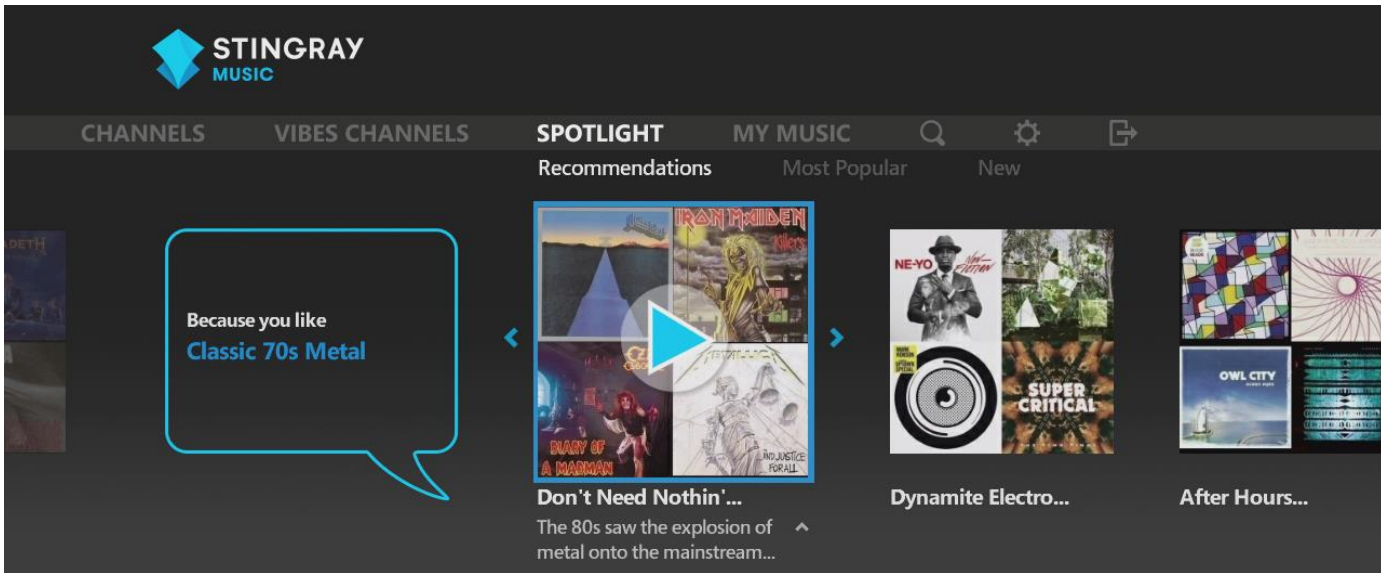
The assigned filters for a Vibes channel can be individually clicked on.



When selecting a filter, the user is taken to a list of other Vibes channels that share the same Vibes filter.

Add more filters to narrow the results, click on any of these channel images on the right to play them, or click on the channel names beneath the images for their contextual menu options: View Channel Info, Play Channel and Add to My Channels.

# SPOTLIGHT



Appearance of the SPOTLIGHT section. As pictured above, the user is in Recommendations and is being shown channels based on their listening habits and what channels they've liked so far.

SPOTLIGHT is the section that follows CHANNELS and VIBES CHANNELS on the main menu bar, and is made up of three (3) subsections: Recommendations, Most Popular and New. Once in Spotlight, the subsections are accessed by moving down to highlight the secondary menu bar, then by moving laterally:

## Recommendations:

Suggested channels based on the user's listening history and the channels they have made into favorites:

- Adding a channel to My Channels will show other channels related to that one.
- Listening to channels will return more suggested channels, labeled by "Because you listened to..."

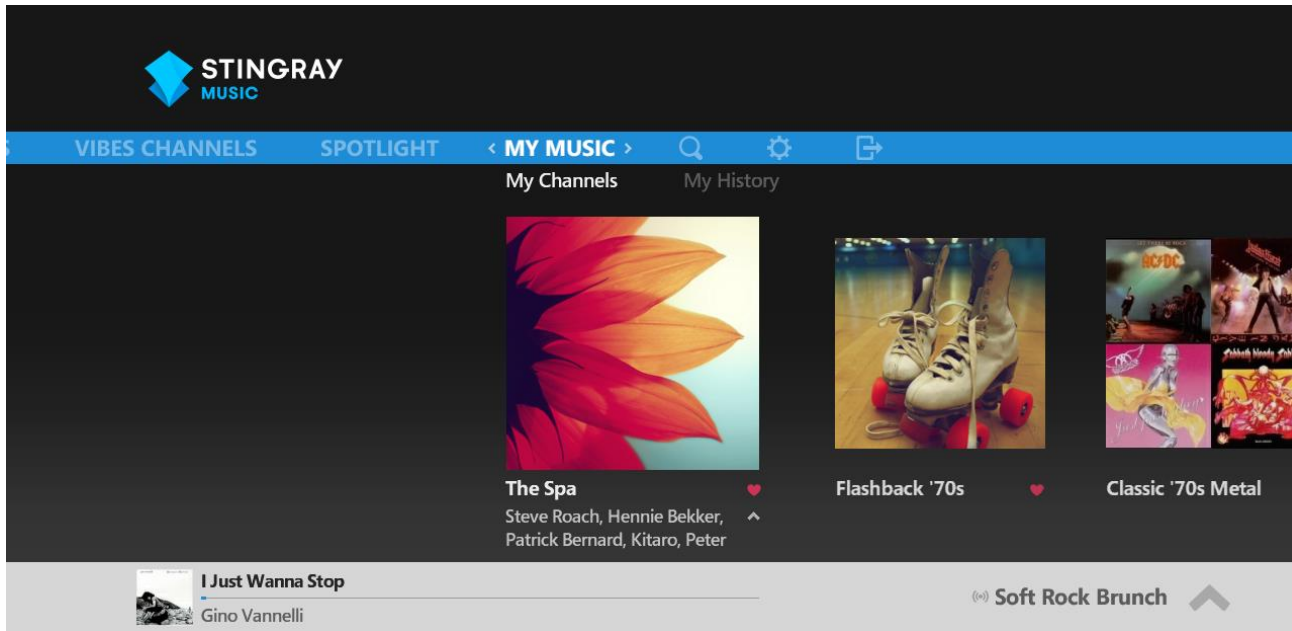
## Most Popular:

Regularly updated, these are the channels that are being listened to the most at the moment.

## New:

New channels are regularly created by Stingray Music's experts and are featured here.

# MY MUSIC



MY MUSIC contains all of the favorite channels, liked tracks & artists, blocked tracks & artists and the user's listening history. These are linked to the profile that is currently active.

MY MUSIC is the fourth section on the main menu bar, after CHANNELS, VIBES CHANNELS and SPOTLIGHT. Once in My Music, the user accesses the subsections by moving laterally on the secondary menu bar, just below the main menu bar.

In the My Music section, with any given profile, the user can:

- Access and play their favorite channels (jump to [My Channels](#))
- Browse and play previously heard channels (jump to [My History](#))

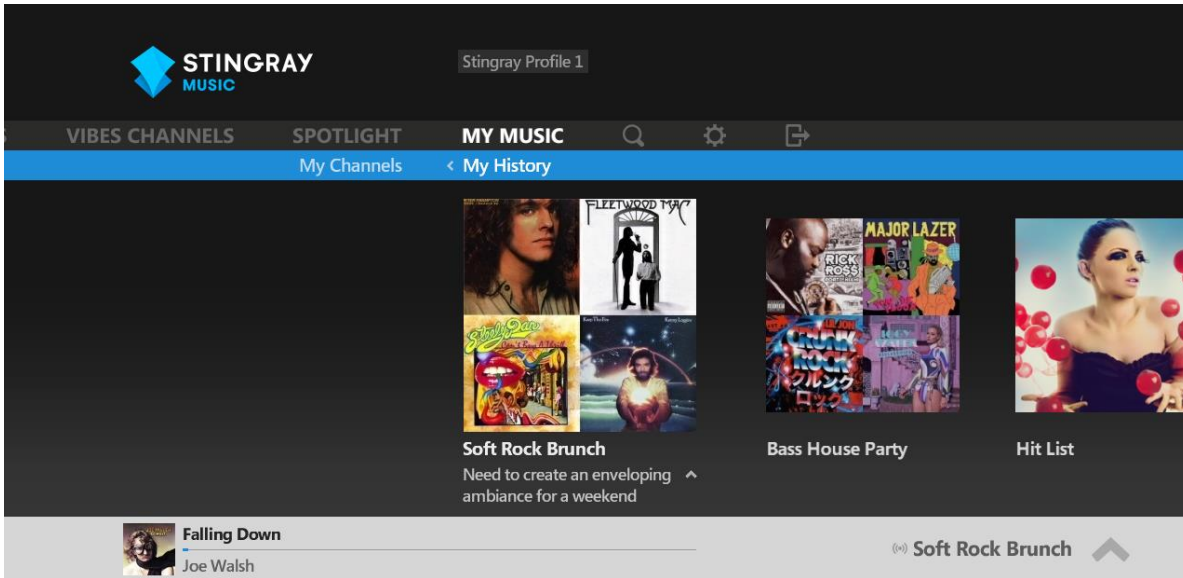
## My Channels

When any channel type is made into a favorite, it is added to My Channels for easier access. Previously heard channels which were not added My Channels can still be viewed in My History (the next subsection in MY MUSIC).

## My History

All channels the user has previously listened to are compiled in My History. They can be played and added as favorites from this subsection as well.

Click on an image to start the corresponding channel with a Cover View, or click on the channel's name then select Play Channel, to start it without transitioning to Cover View.

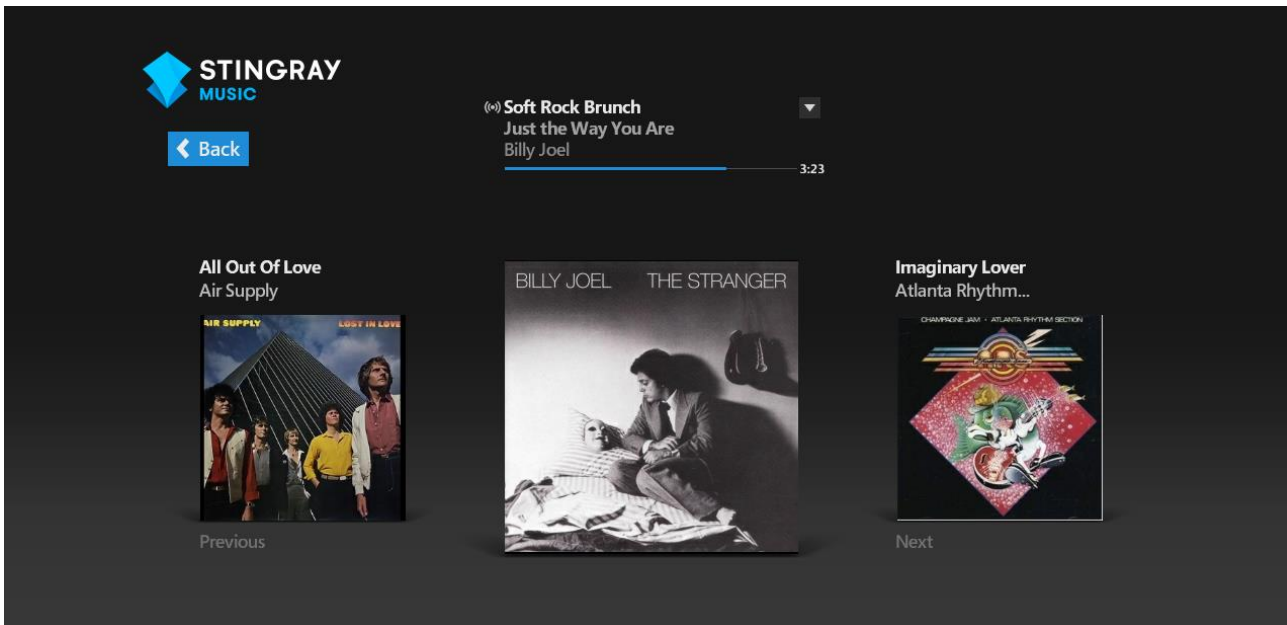


Previously heard channels are compiled in My History, with most recent entries starting from the left.

## Relaunching the App (a channel was played prior to leaving the app)

Expected to occur:

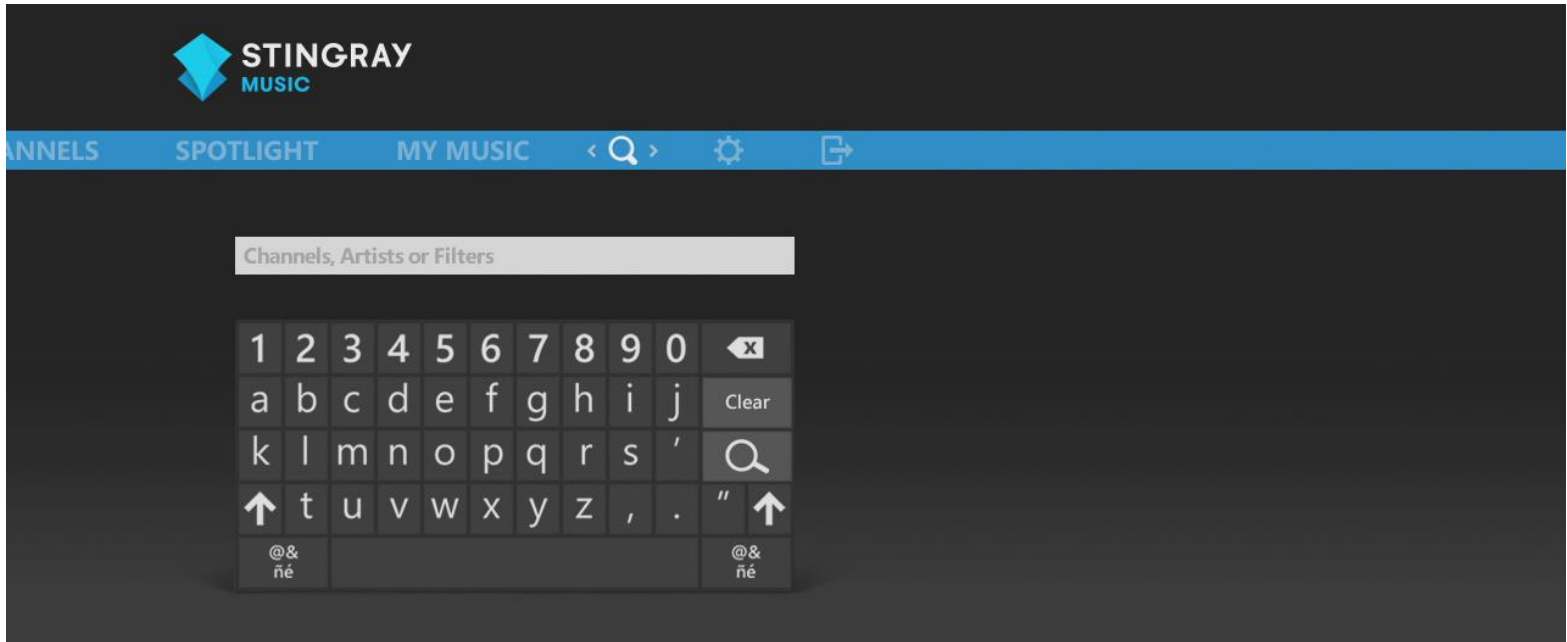
- If multiple profiles exist, user is asked to select one before app is launched
- User arrives at the Cover View page
- Since a channel was last played, the user joins the broadcast already in session




When app is relaunched, the default action is to tune to the last played channel in Cover View. In the image above, the user has returned to a regular channel already in session. In addition to seeing what song is currently playing, the user is informed of the previous track as well as what will play next.

## SEARCH

Instead of browsing through Channels, Vibes Channels or any of their subsections, the user can also look for a particular item or broad suggestions in the Search section.



### How to get there:

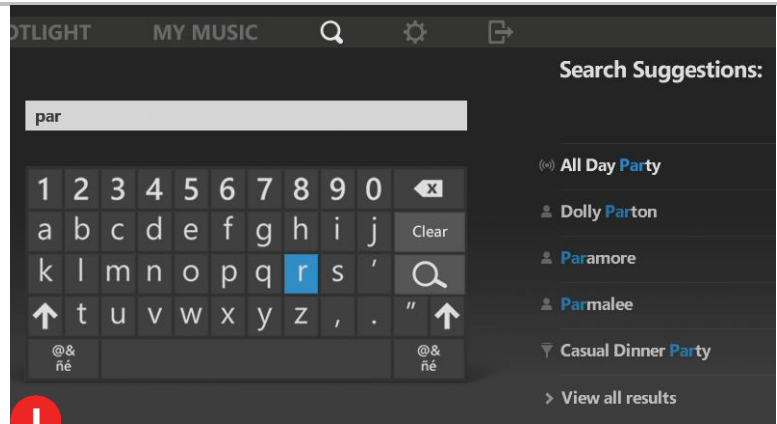
- Highlight the main menu bar
- Move to the right until the Search icon  is centered between the chevron arrows
- Once in Search, the on-screen keyboard will appear
- Move down and type using the on-screen keys to search item

### What can the user search for?

- Channels
- Artists
- Filters, to find correlating Vibes channels

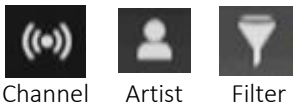
## Use Case:

It's the evening; the user is preparing for a party and is searching for an appropriate Vibes channel to play:



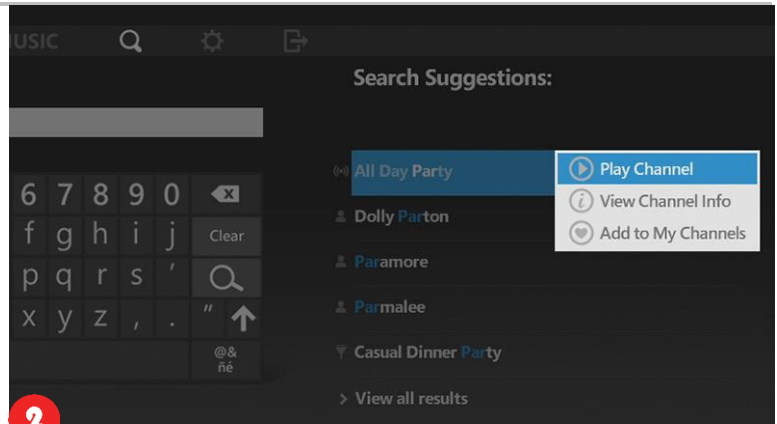
The user starts to type *party* using the on-screen keys.

The best results will begin appearing as soon as the user types three letters, seen under Search Suggestions, clearly separated and grouped by their icon identifiers:



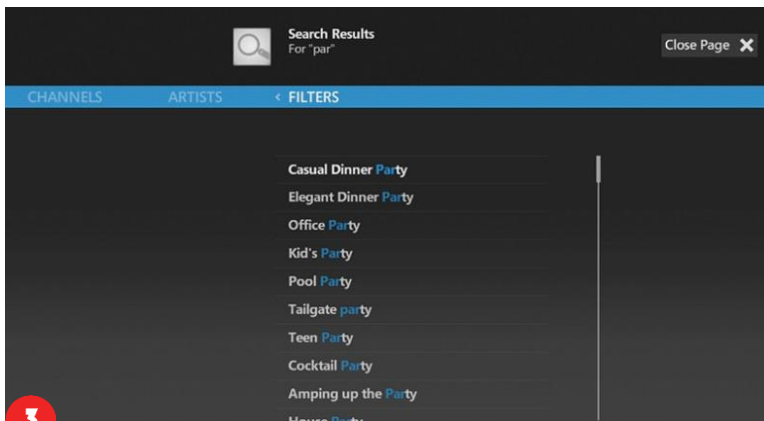
These suggestions are further refined as the user continues to type out their search term.

If there are too many results to list on the screen, View all results can be clicked on at the bottom of the list



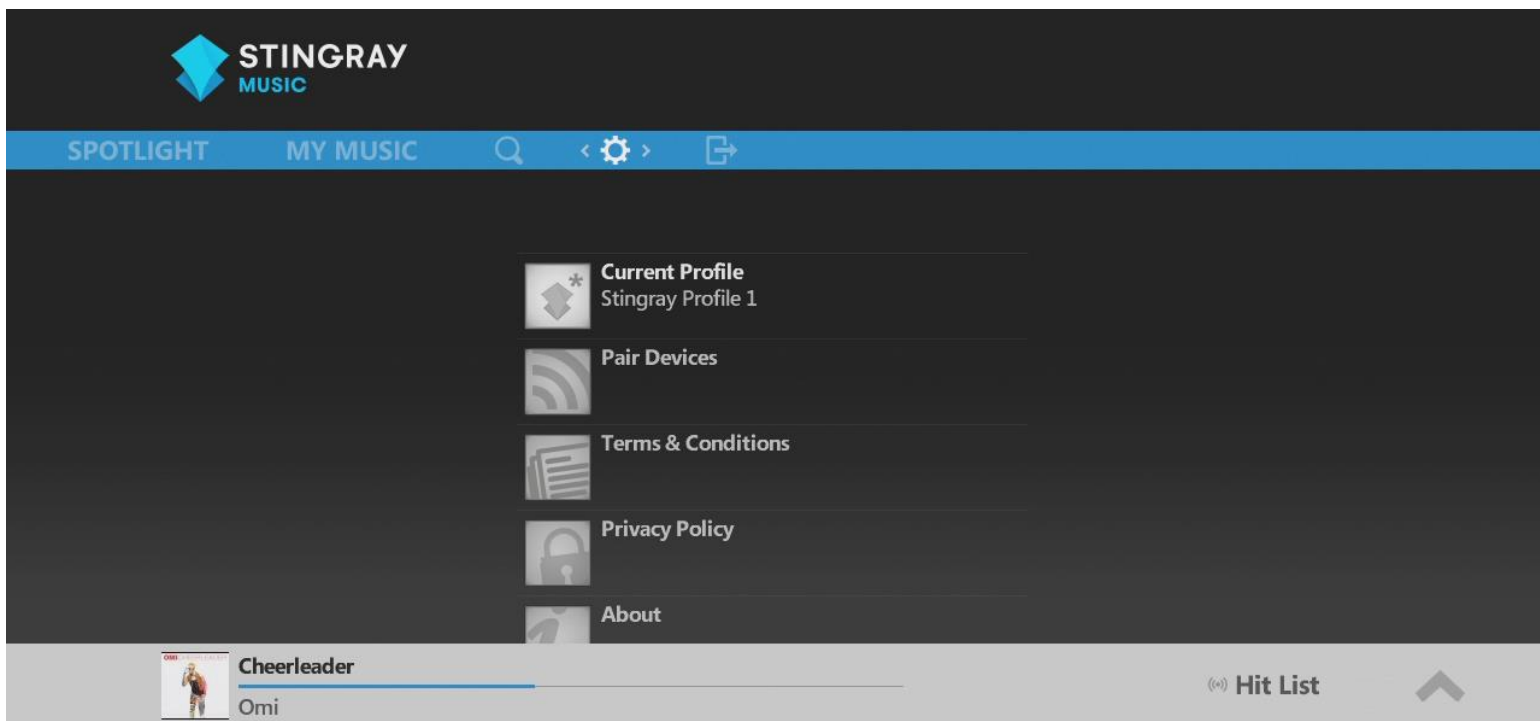
Each result in the Search Suggestions column can be clicked on for more options:

- Channels can be played immediately, be added to favorites or have their Info sections accessed.
- Artists can be selected to view their info pages.
- Filters can be selected. Doing so will bring the user to the Explore interface in Vibes Channels, with this filter in 1<sup>st</sup> position and related results already listed. The user may stay there to explore their results and/or continue adding/modifying filters.



In “View all results” users see the results divided into their respective categories. Categories without any relevant results will not have content. These lists can be browsed by moving right or left. The items within are also clickable for options (as was presented in step 2).





The *SETTINGS* section.

Settings is the second-to-last section on the right end of the main menu bar.

Features that are not used as often have been placed in this section to streamline the app's interface:

- Profile management
- Device pairing (if applicable)
- Legal texts
- App version number (About)

## Current Profile

From the Settings section, Current Profile indicates which profile is currently in use, without having to go inside to the Profiles page. Selecting Current Profile takes the user to the Profiles & Account pages.

Once in Profiles & Account, the user accesses the Account page by moving right, using the remote's arrow/ directional keys.

## Profiles

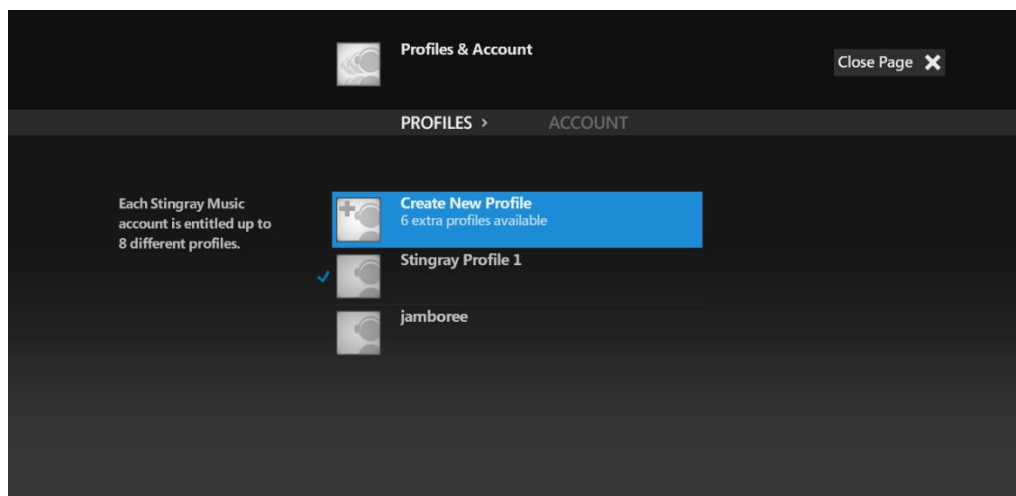
Allows a user to manage their profiles. All user activity made on channels (i.e. listening history and addition to My Channels) affect the profile that is currently active.

The profile that is active at the moment has a check mark next to it.

If there is more than one profile on the page, a different one may be selected for use.

To do this:

- Click on an inactive profile (one without a check mark).
- Choose Set as Current Profile from its contextual menu



### I. Create New Profile

User may create up to eight (8) profiles; each one can store its own user-related activity (i.e. listening history and addition to My Channels).

Provided there are unused profiles remaining, the user can select “Create New Profile”, which also indicates how many more profiles they are allowed to create.

Once they click on Create New Profile, the user is taken to another area where they name the new profile. They enter characters using the on-screen keyboard. The action (creation) is confirmed when the on-screen OK button is clicked on. Alternately, when they have finished naming the profile, the user may click their remote’s OK/ Select button while the input field is still highlighted.

Once returned to the Profiles page, the new profile is listed and can be selected for use.

### II. Rename Profile

Select an existing profile and choose Rename Profile from the contextual menu. From there the user is taken to a page where they rename their profile using the on-screen keyboard. The action (renaming) is confirmed when the on-screen OK button is clicked on. Alternately, when finished renaming the profile, user may click their remote’s OK/ Select button while the input field is still highlighted.

Once returned to the Profiles page, the renamed profile is listed but its saved user-related activities have not been modified.

### III. Reset Profile

Click on an existing profile and choose Reset Profile from the contextual menu. A message will appear on-screen asking the user to confirm their decision.

This resets ALL saved user-related activities (i.e. listening history, favorite channels) linked to that profile, without deleting the profile.

#### Before resetting a profile:

---

This resets ALL saved items related to the user (i.e. listening history and favorite channels) that were made while that particular profile was active.

Once reset, the operation cannot be undone.

---

### IV. Clear listening history

Select an existing profile and choose “Clear listening history” from the contextual menu. A message will appear on-screen asking the user to confirm their decision.

Once the action is confirmed, the profile’s listening history as well as the lists of played tracks from all heard channels will be reset.

Once the listening history is cleared, the operation cannot be undone.

### V. Delete Profile

Select an existing profile and choose Delete Profile from the contextual menu. A message will appear on-screen asking the user to confirm their decision.

Once the action is confirmed, the profile and all of its stored user-related activity will be removed from the app.

Once the profile is deleted, the operation cannot be undone.

If the active profile was selected for deletion (provided there is more than one existing profile), another profile will be automatically activated.

While it can be reset, it is impossible to delete a profile if it’s the only one that has been created. The user would have to create another one beforehand (the remaining profile will thus become the active one after deletion).

### Account:

The user accesses the Account page by moving to the right from the Profiles page.

A user with a subscription to a TV provider can consult their subscription information on this page:

- Who their TV provider is
- Their type of account

## The Stingray Music mobile app - Pair Device (where applicable)

TV subscribers in some regions can download the mobile version of Stingray Music and listen to their music on-the-go. Since subscribers already have access to Stingray Music via their TV providers, they can use the mobile app for free.

Provided the user has a mobile device (smartphone or tablet) that's compatible, they may use it to sync their user activity from every profile across all their devices, including the TV set-top box.

Steps:

- 1 - The user ensures that they have the Stingray Music mobile app already installed on their mobile device.
- 2 - On the TV app, user moves to the Settings section. From there, they can access the Pair Device page.
- 3 - The user follows the detailed on-screen instructions. Here is a summary of the step:
  - a. The user will be required to scan an on-screen QR code or to enter a 4-digit code to pair his device.
  - b. When a success message is displayed, the user's customizations are shared across all devices.
  - c. All devices are automatically updated whenever the user makes music-related modifications.

## Terms & Conditions

Users are automatically bound to certain legal regulations by using the app.

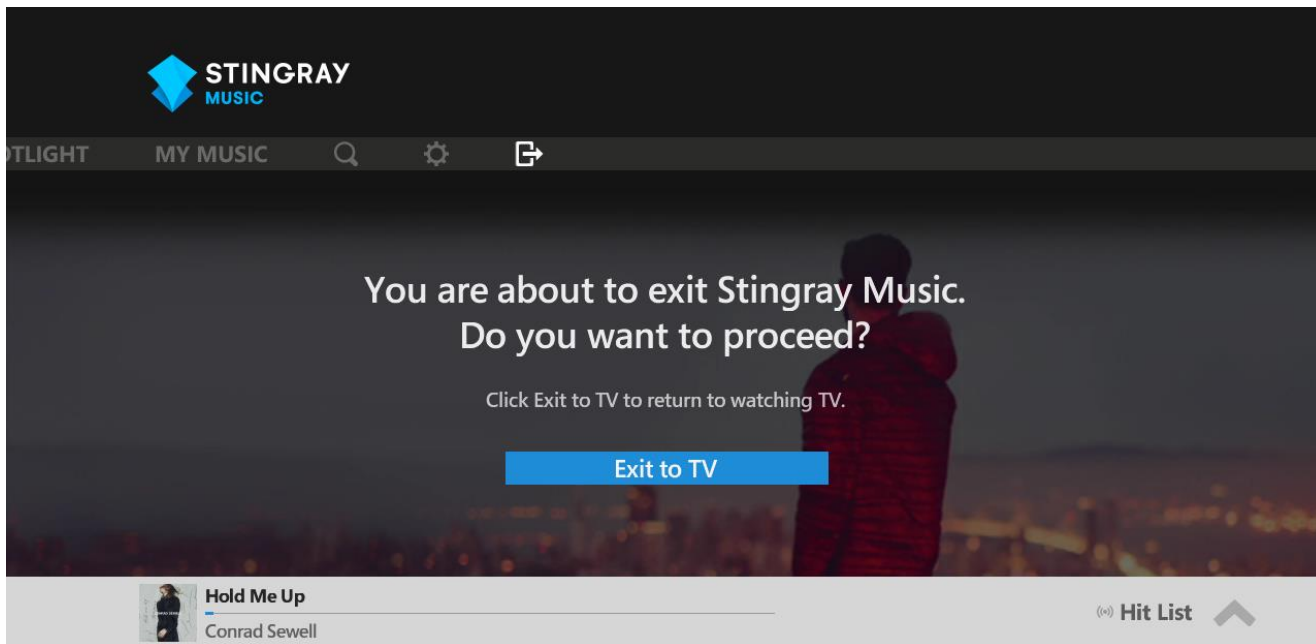
## Privacy Policy

The user can consult this legal document regarding their privacy vis-à-vis their usage of the Stingray Music TV app


## About

Legal copyright information, including current version number of the TV app, which is a useful reference for when users need to contact customer support.

EXIT TO TV 



*The EXIT TO TV confirmation screen.*

When the user is ready to leave the app, they will navigate all the way to the right of the main menu bar until this “exit” icon  comes into focus.

They will be met with a confirmation message and an action button on the screen. They will click on this “Exit to TV” button to confirm this decision.